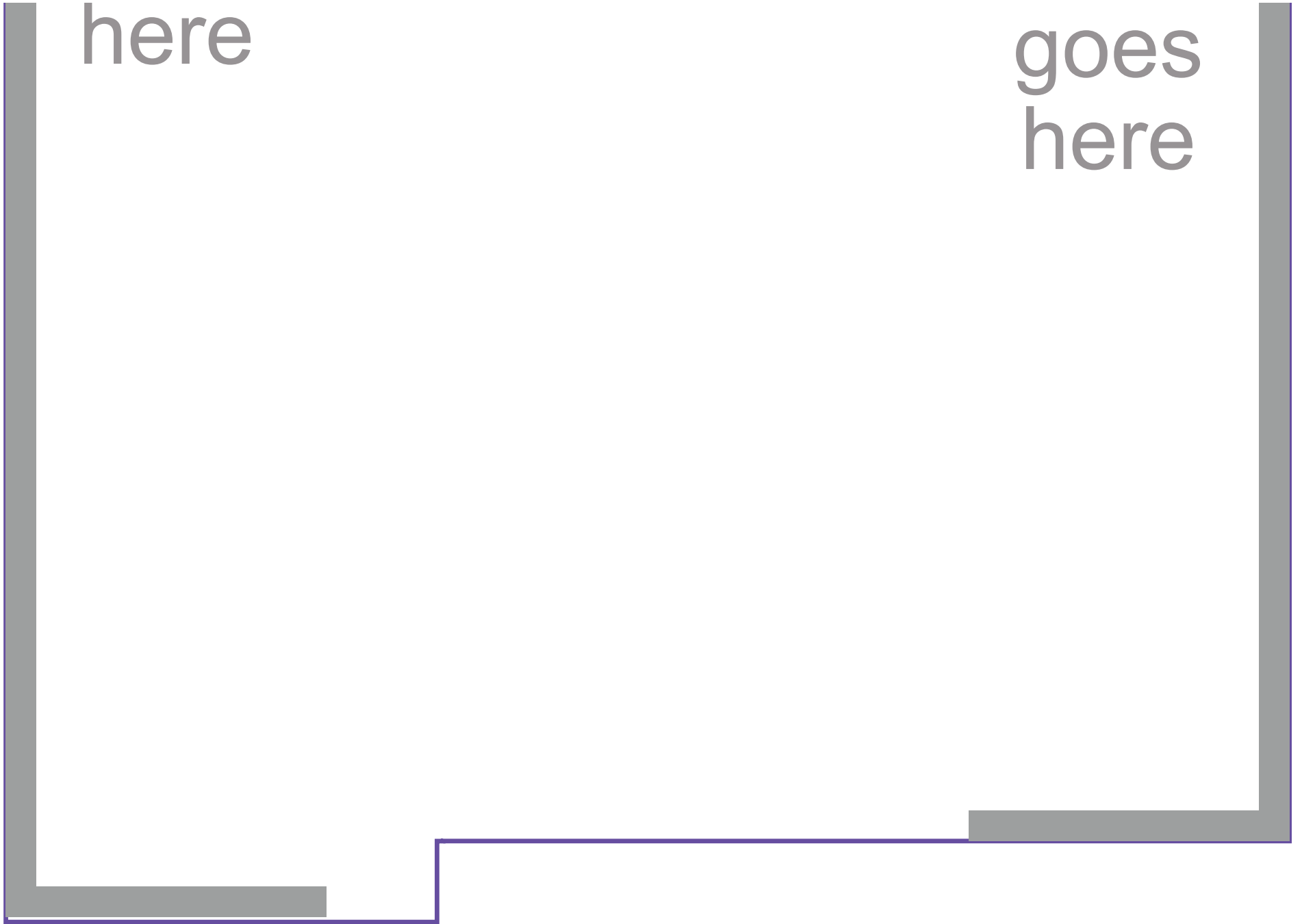
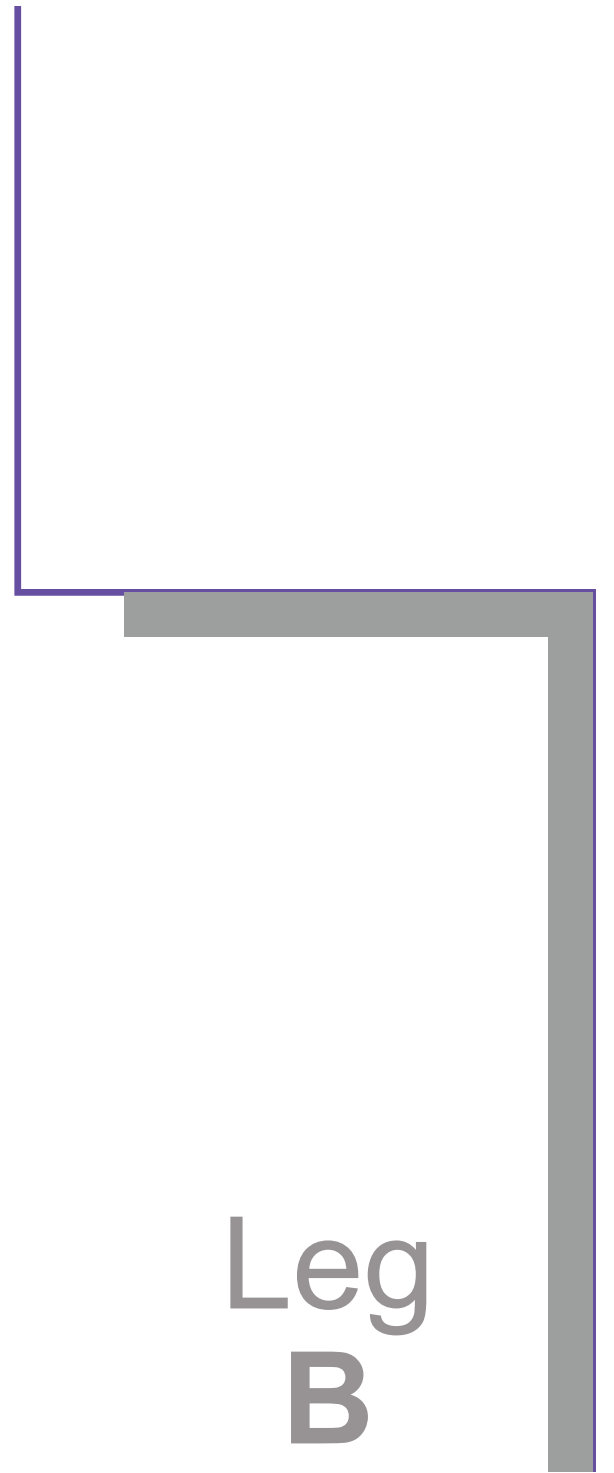
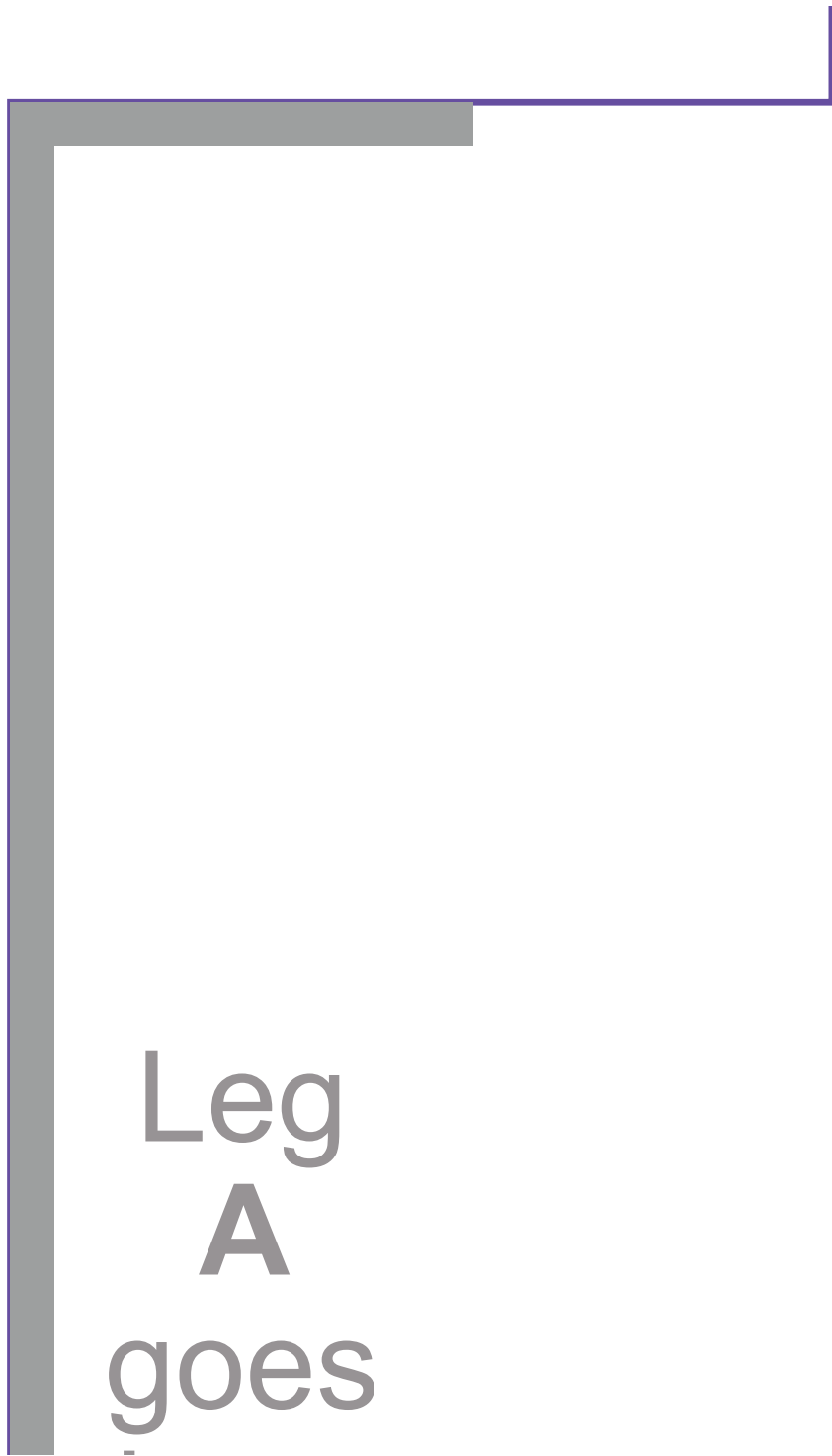
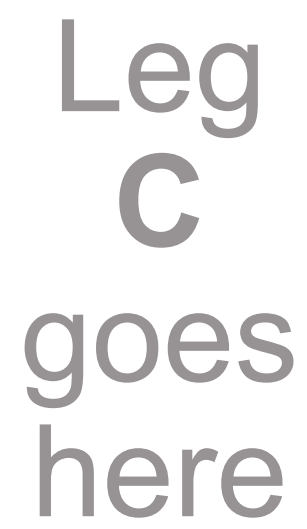


here

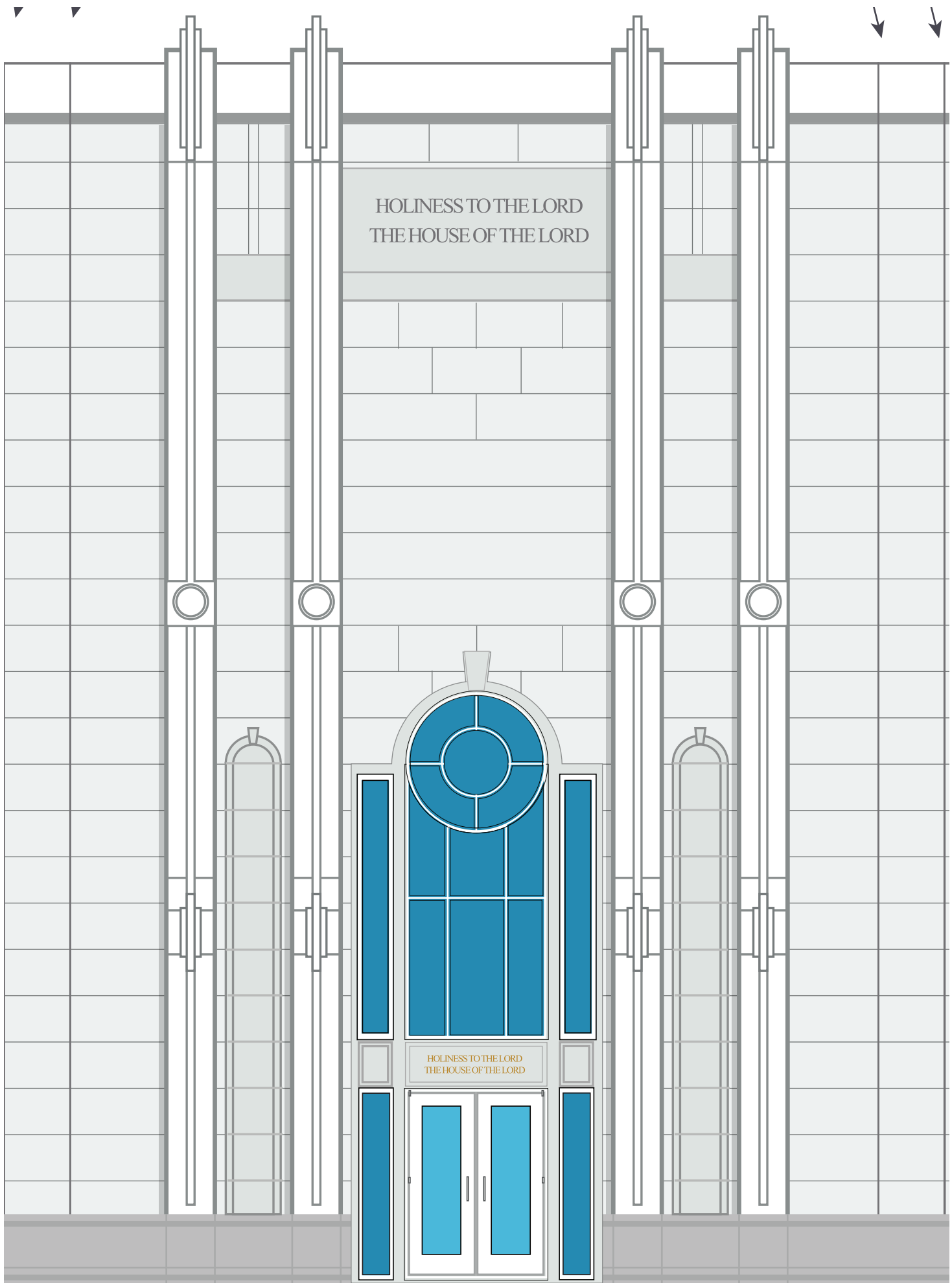
goes
here

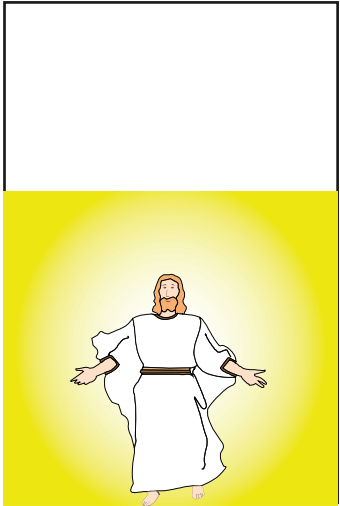
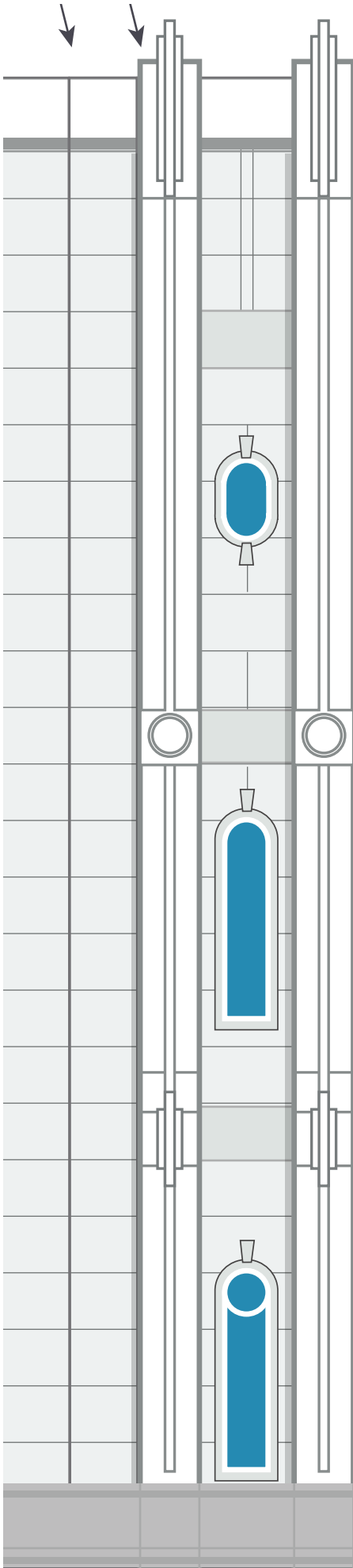
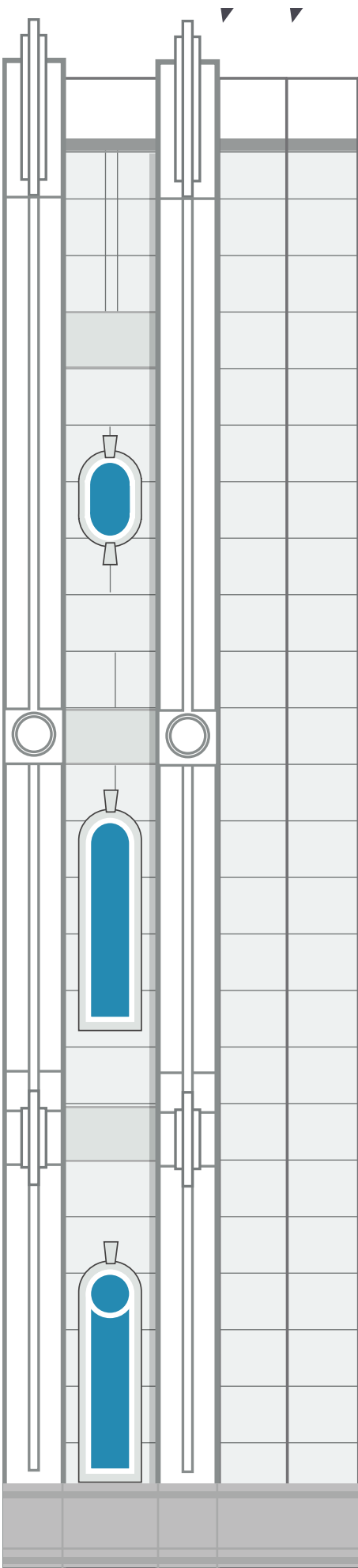






Leg
C
goes
here





This is

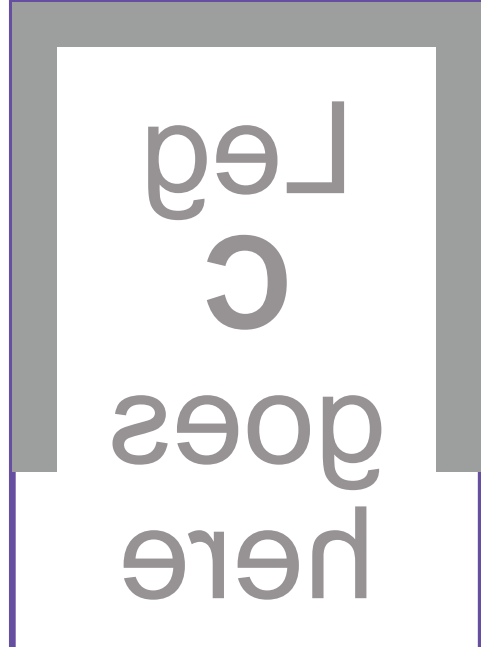
Leg

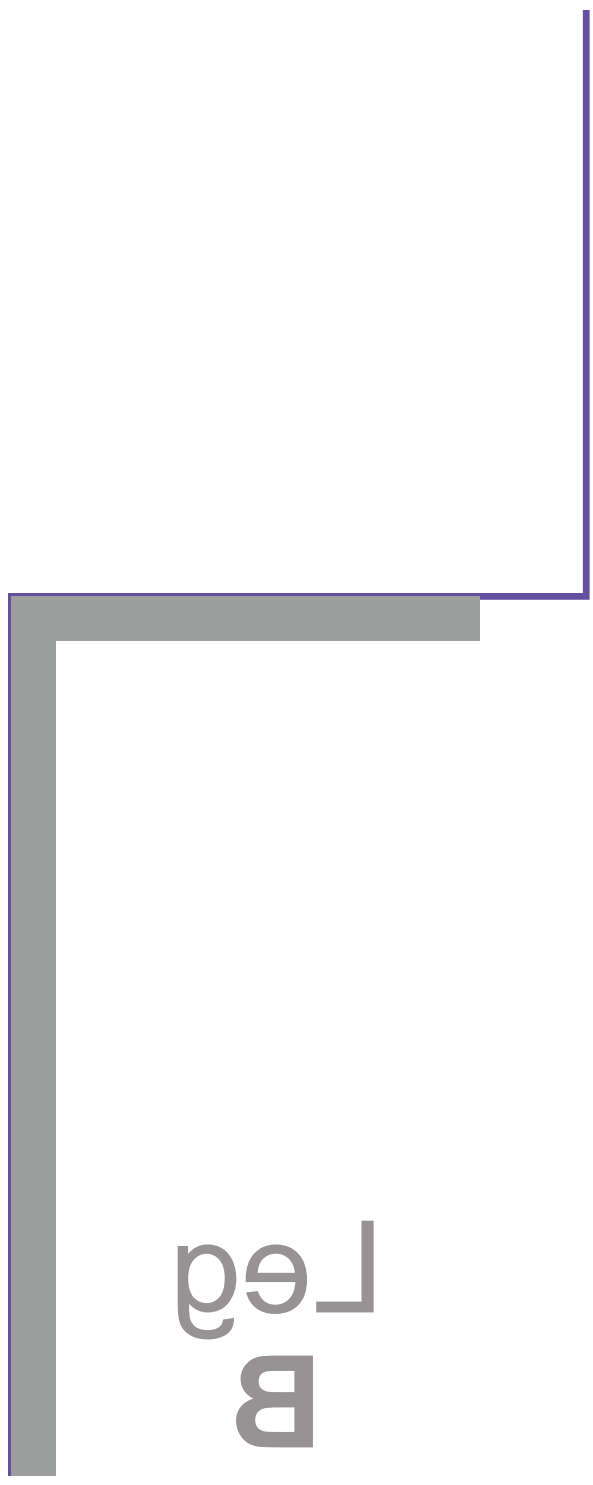
C

tuck under/behind
front door

BOTTOM







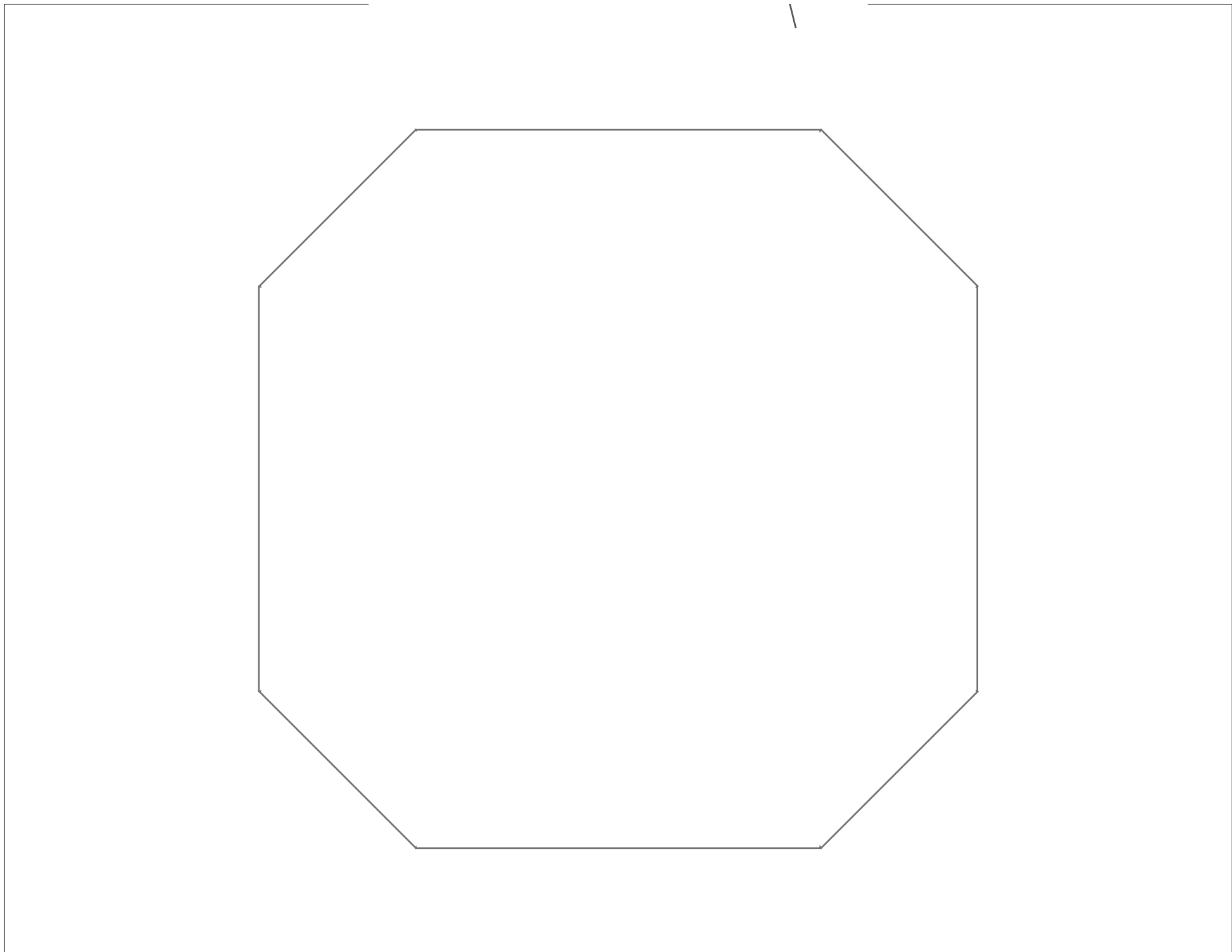
B
_ed

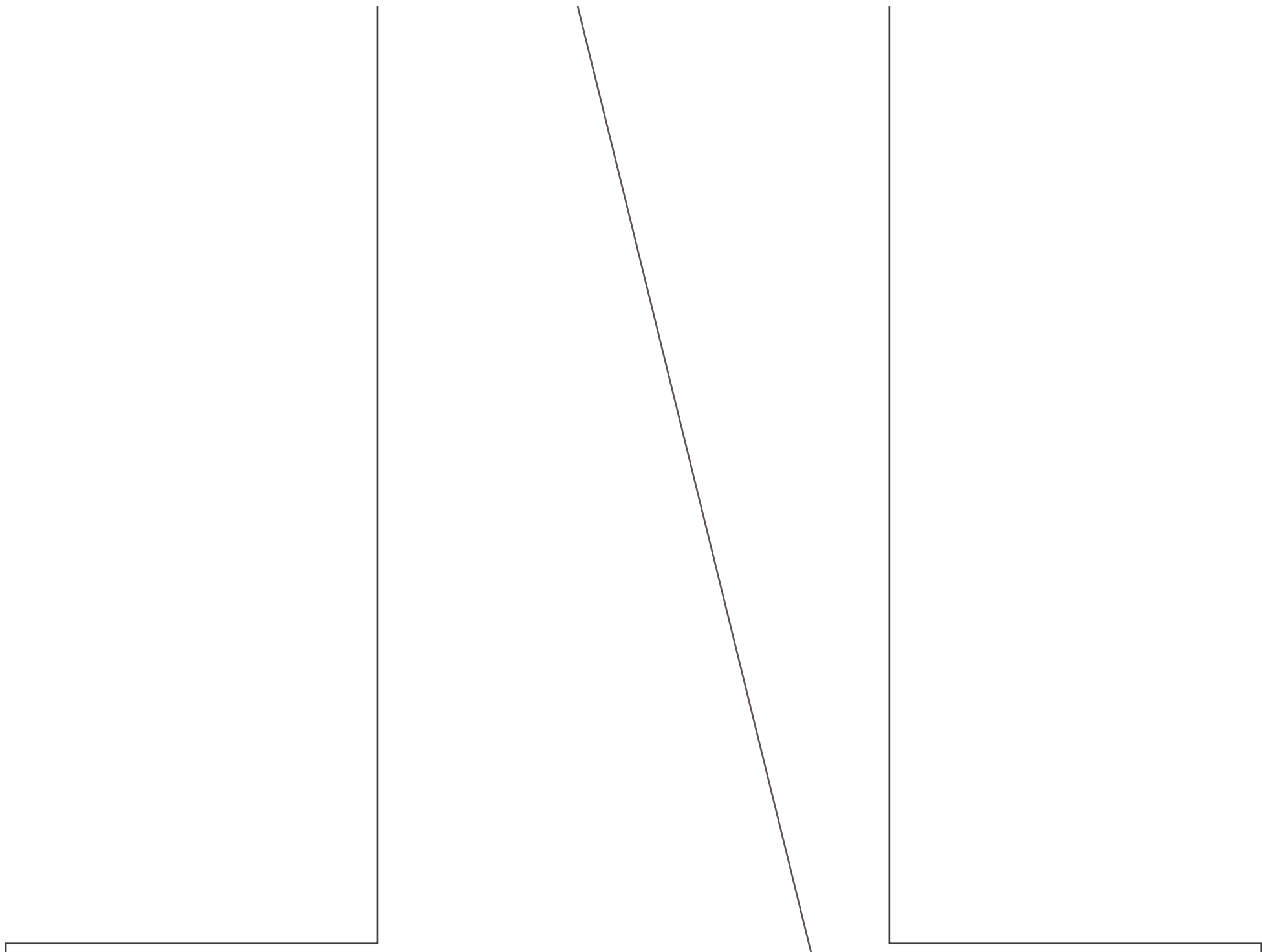


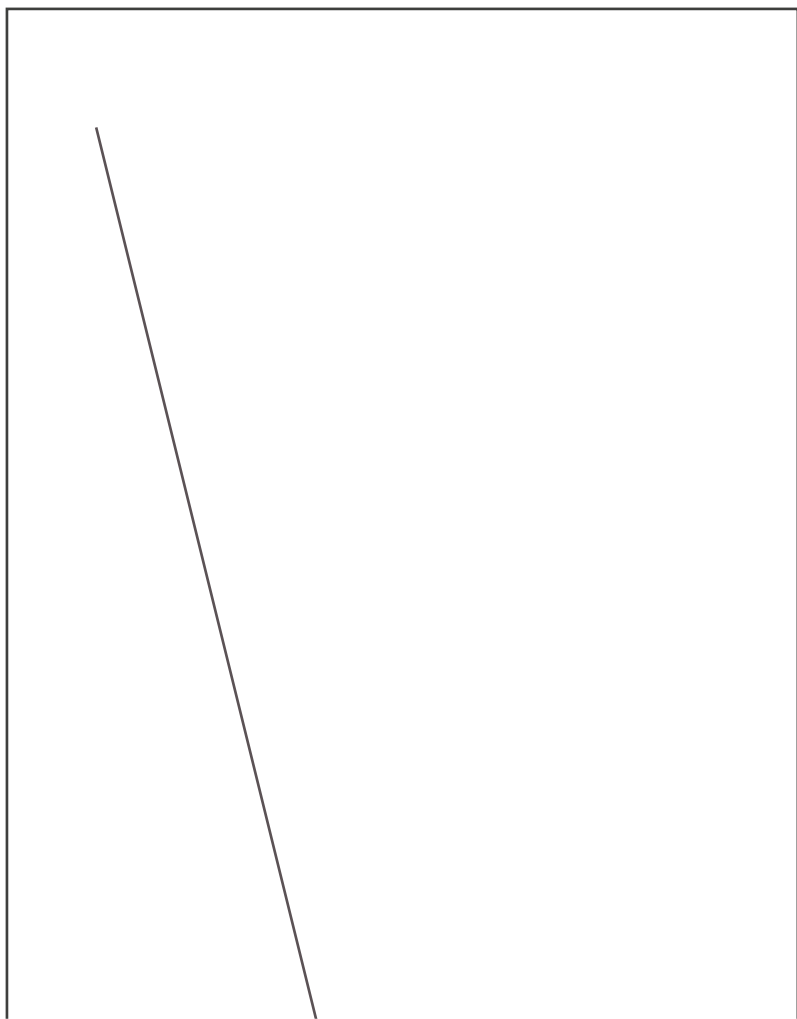
does
A
_ed

does
here

here





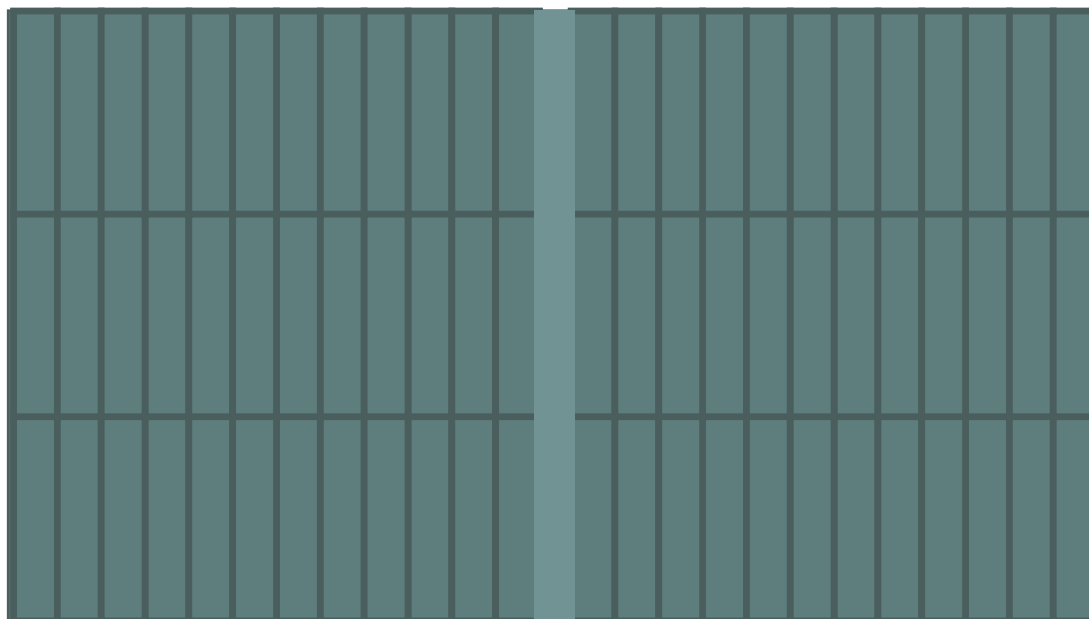
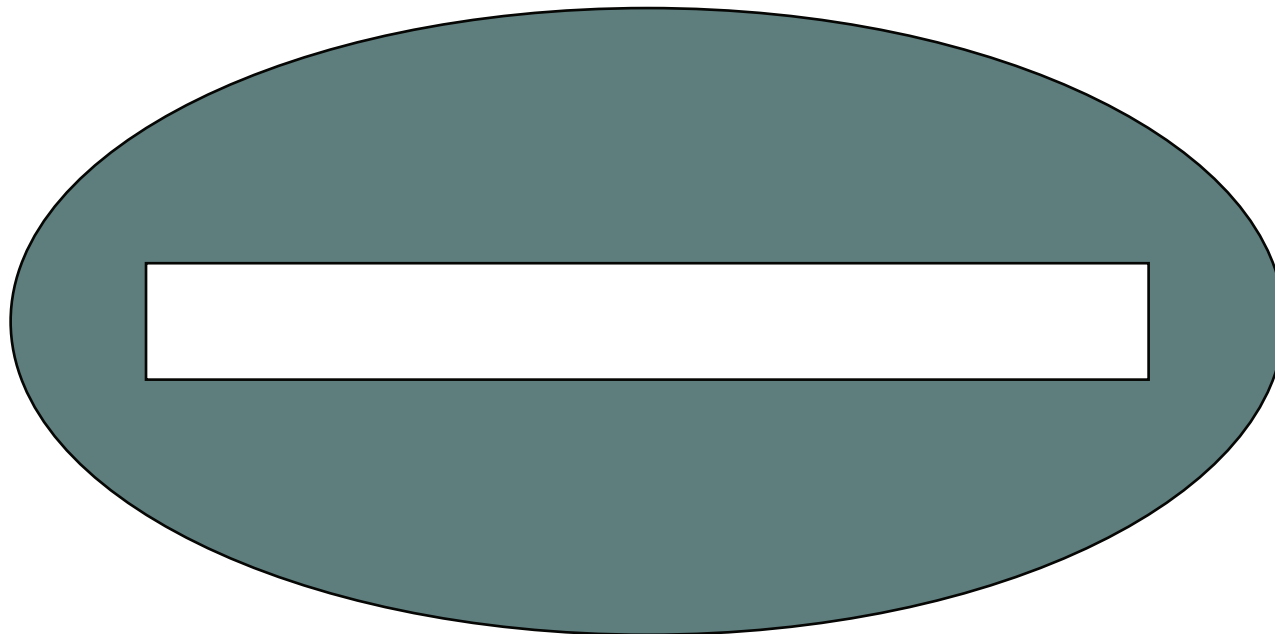


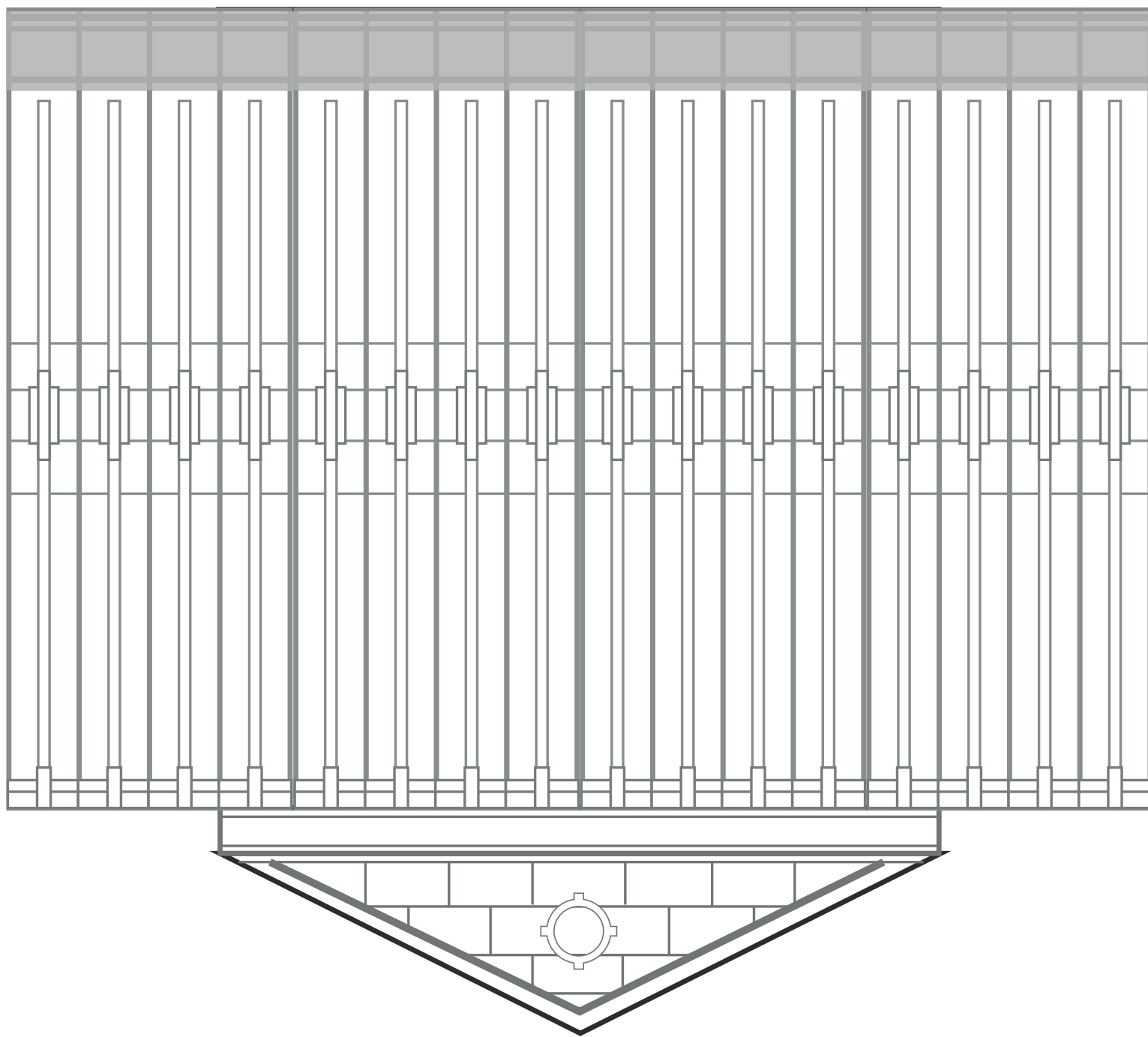
The graphic is a stylized representation of a temple floor plan. It features a central rectangular area with a double-line border. This central area is flanked by two horizontal bars, one above and one below, and two vertical bars, one to the left and one to the right, all in a dark teal color. The central area contains the temple's name and dedication dates.

HOUSTON TEXAS TEMPLE

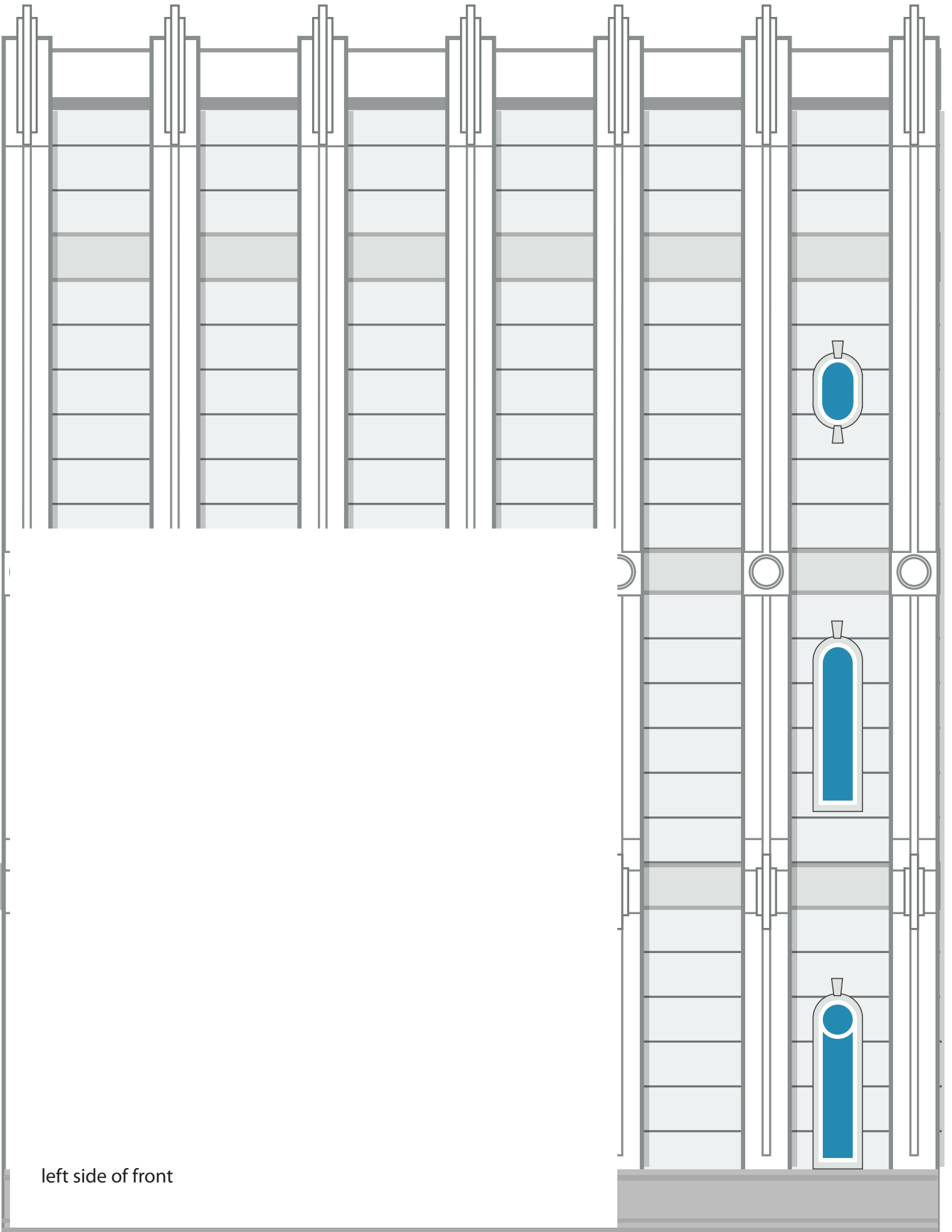
The Church of Jesus Christ of Latter-day Saints

- Dedicated August 26, 2000
- Rededicated April 22, 2018





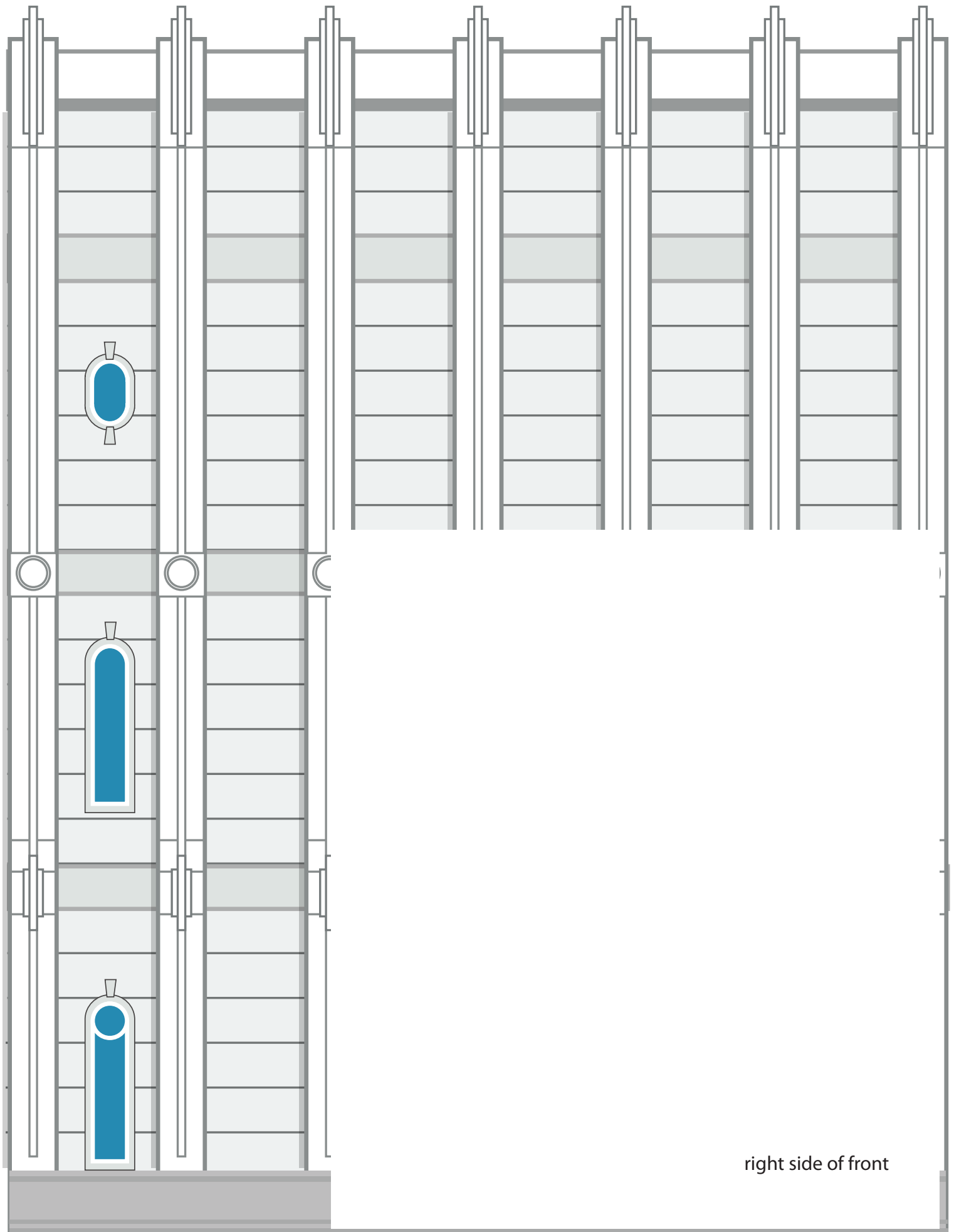
The diagram illustrates a building layout with a central vertical shaft and horizontal corridors. The building is divided into a large left section and a smaller right section. The right section has five floors, each with a horizontal corridor and a central vertical shaft. The shaft is labeled 'Vertical Shaft' and 'Horizontal Corridor'.



left side of front

fold to

fr
pie
ter
wil
h

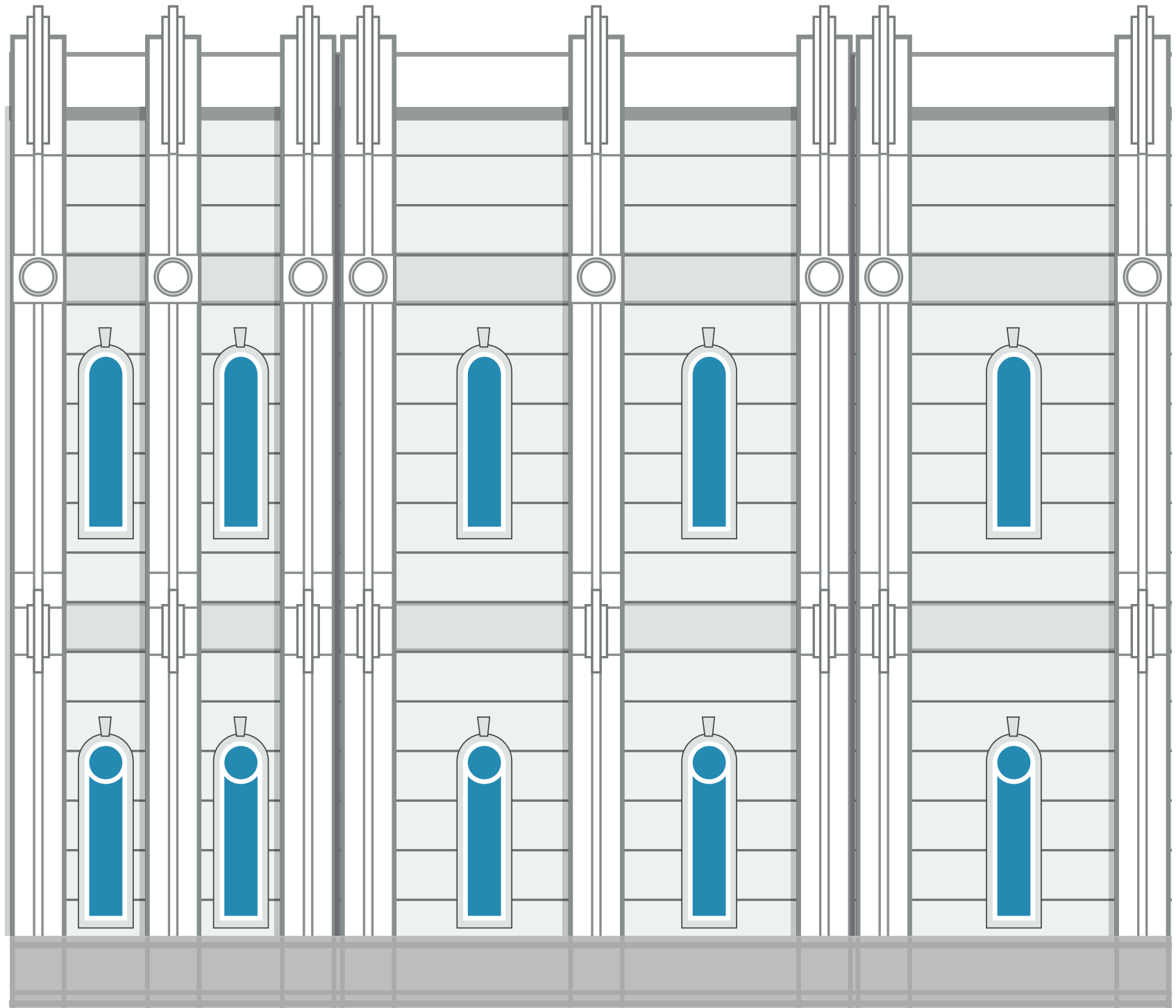


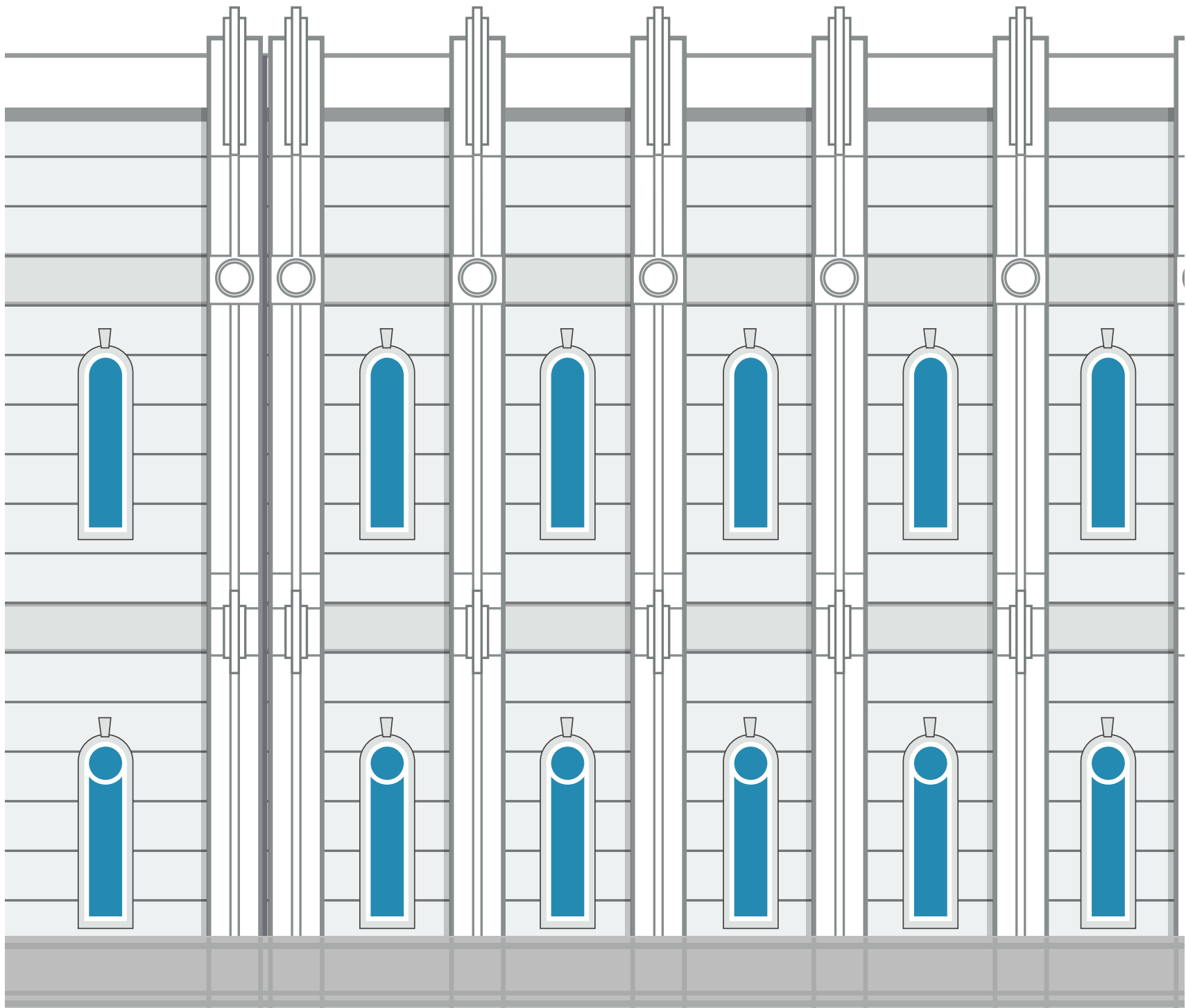
right side of front

ward you

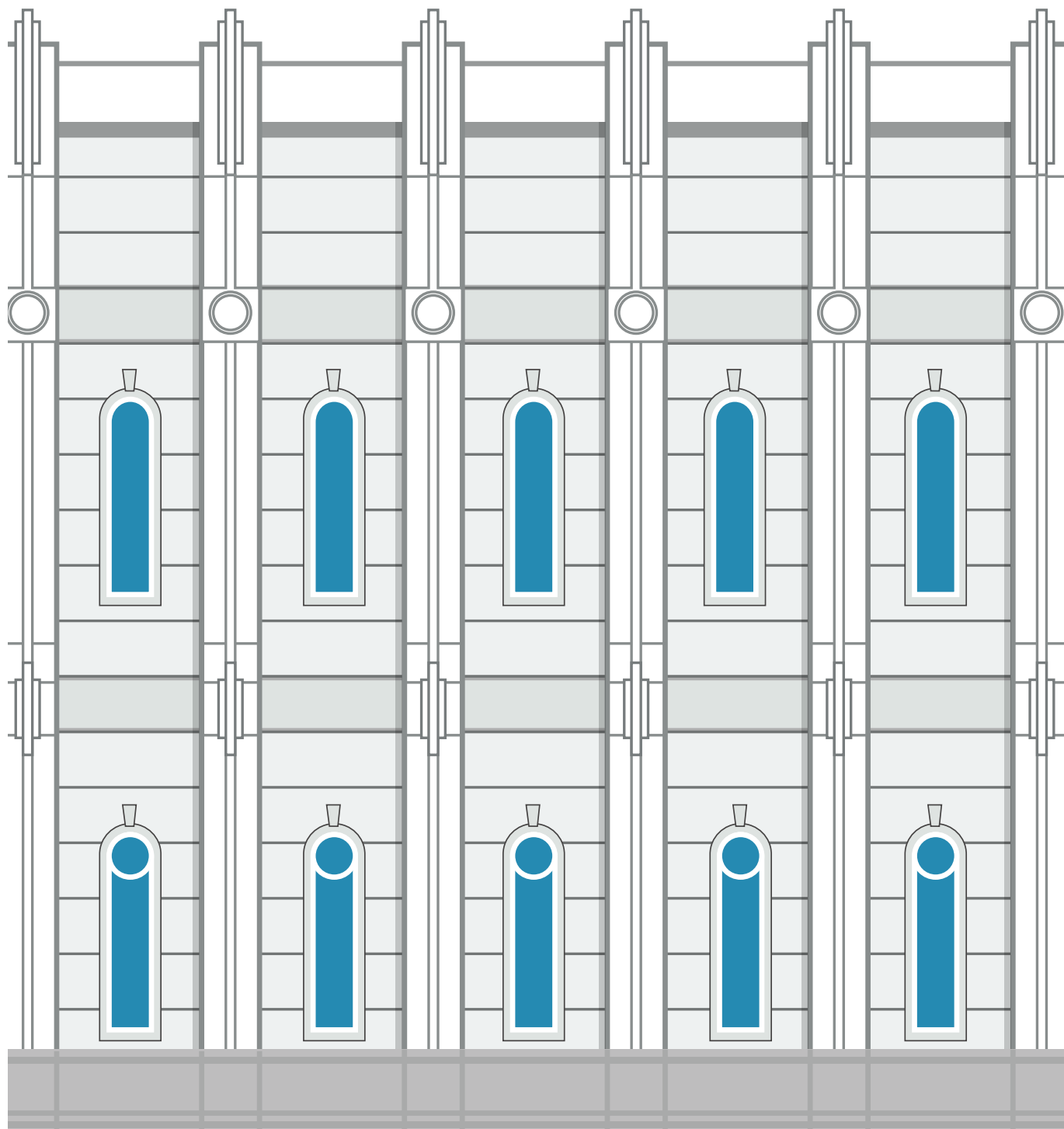
ont
ce of
nple
ll go
ere

1



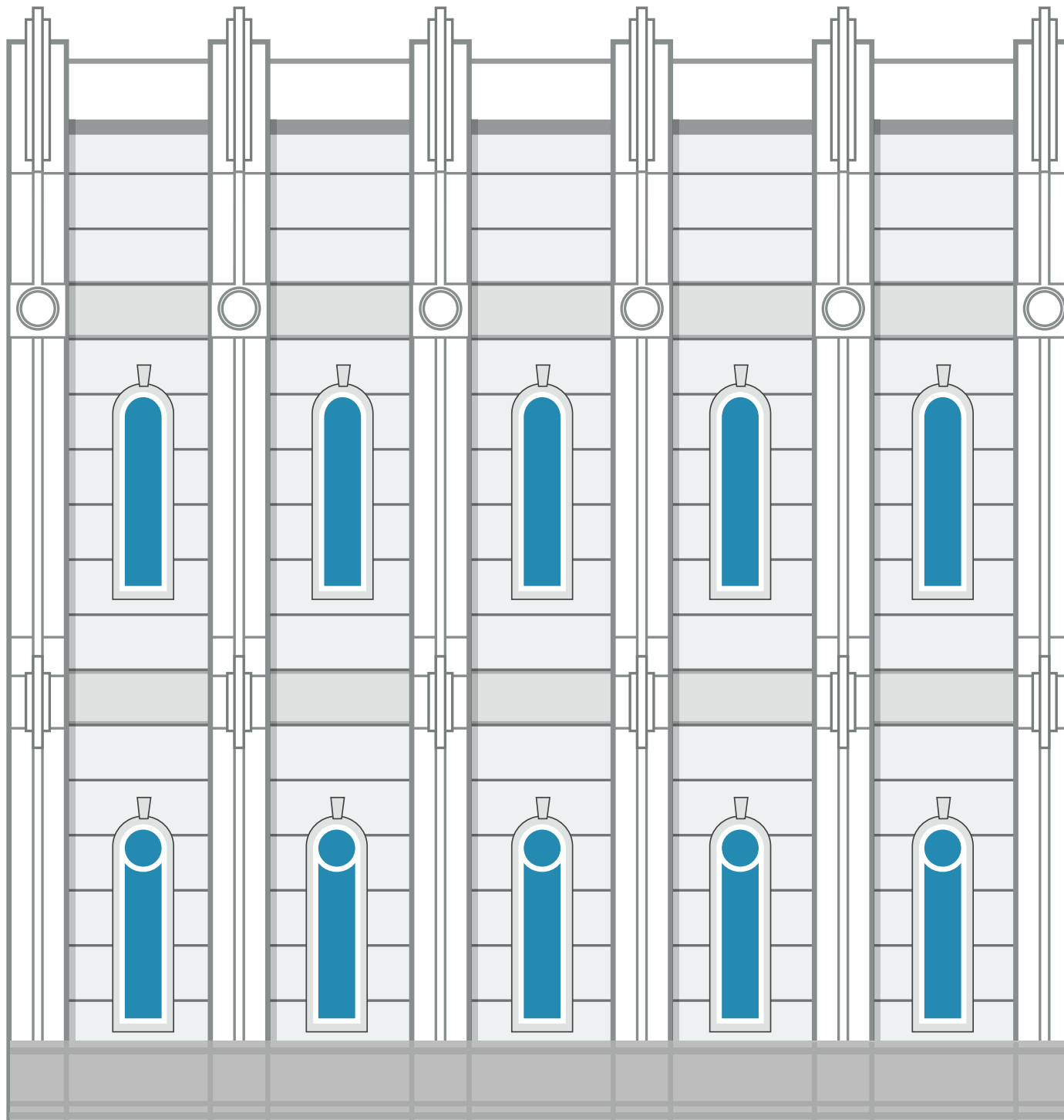


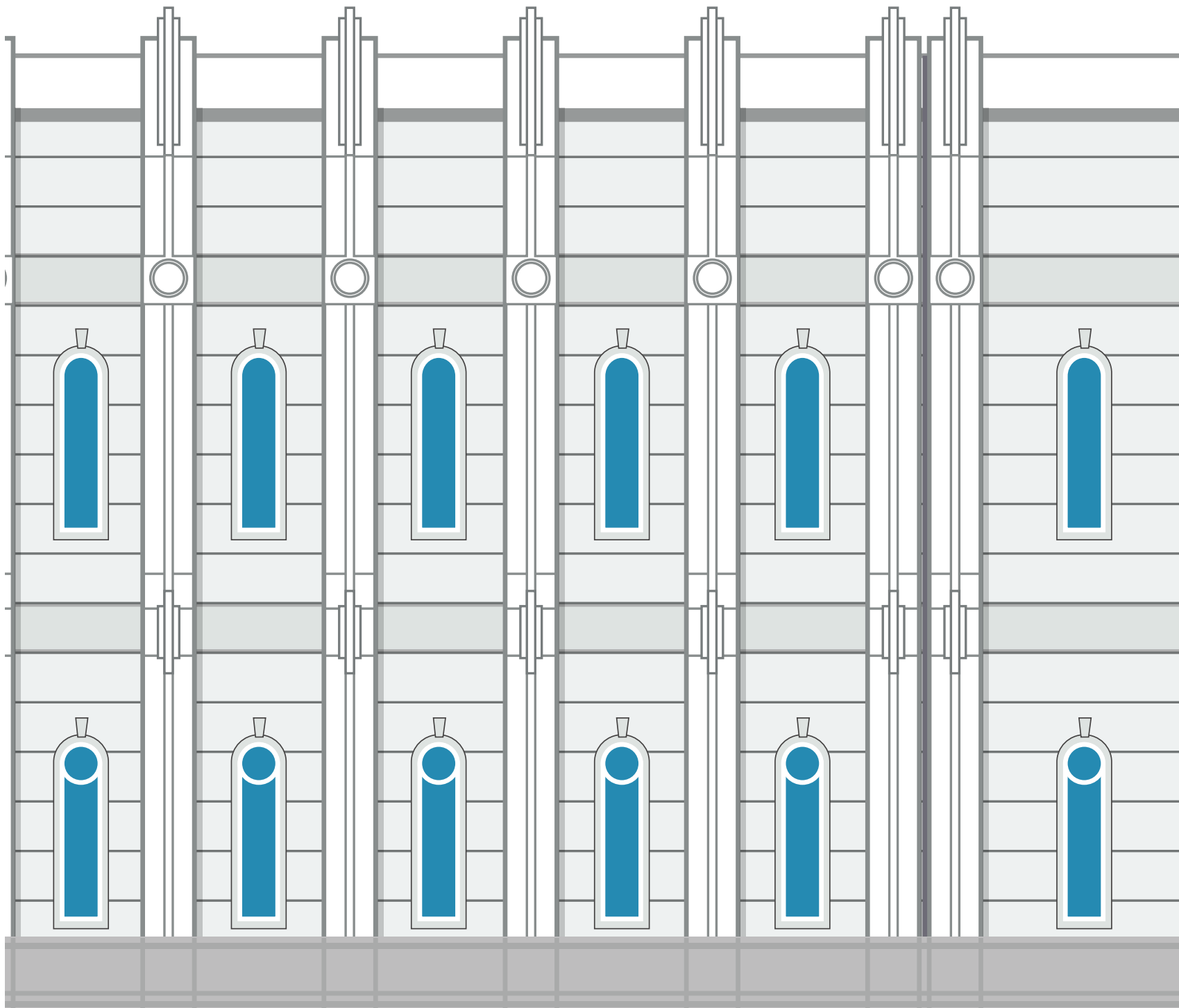
2



3

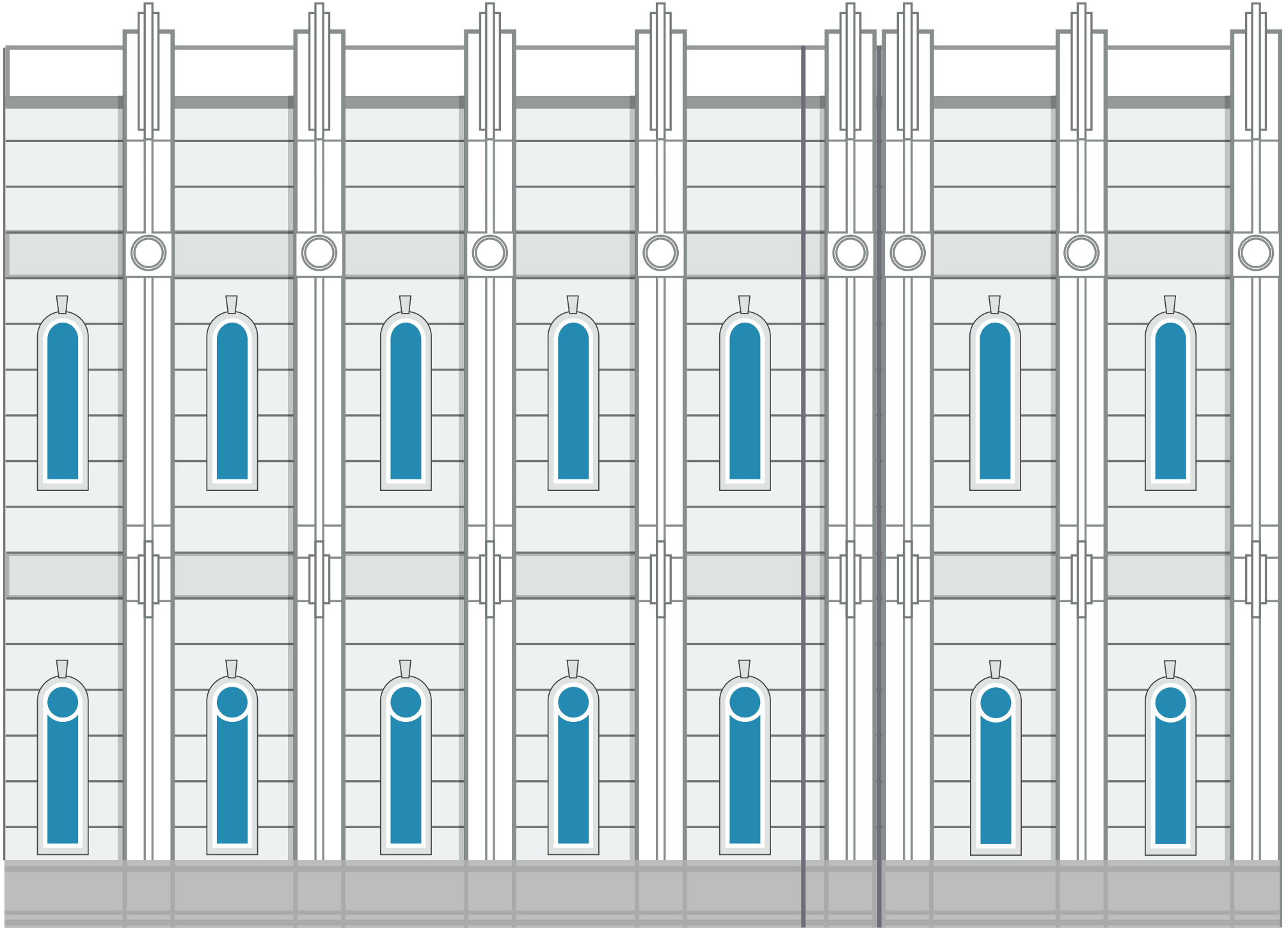
A

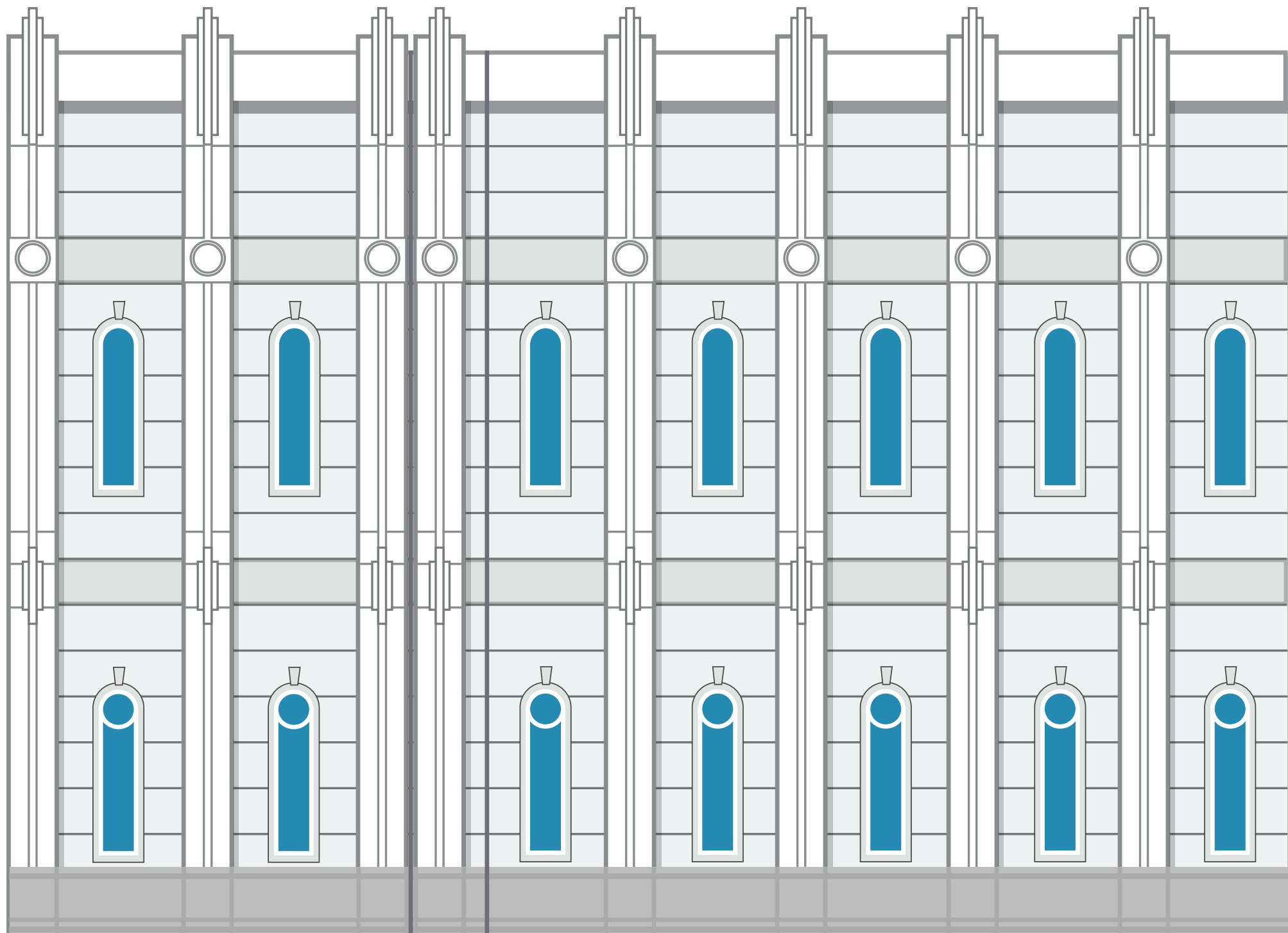


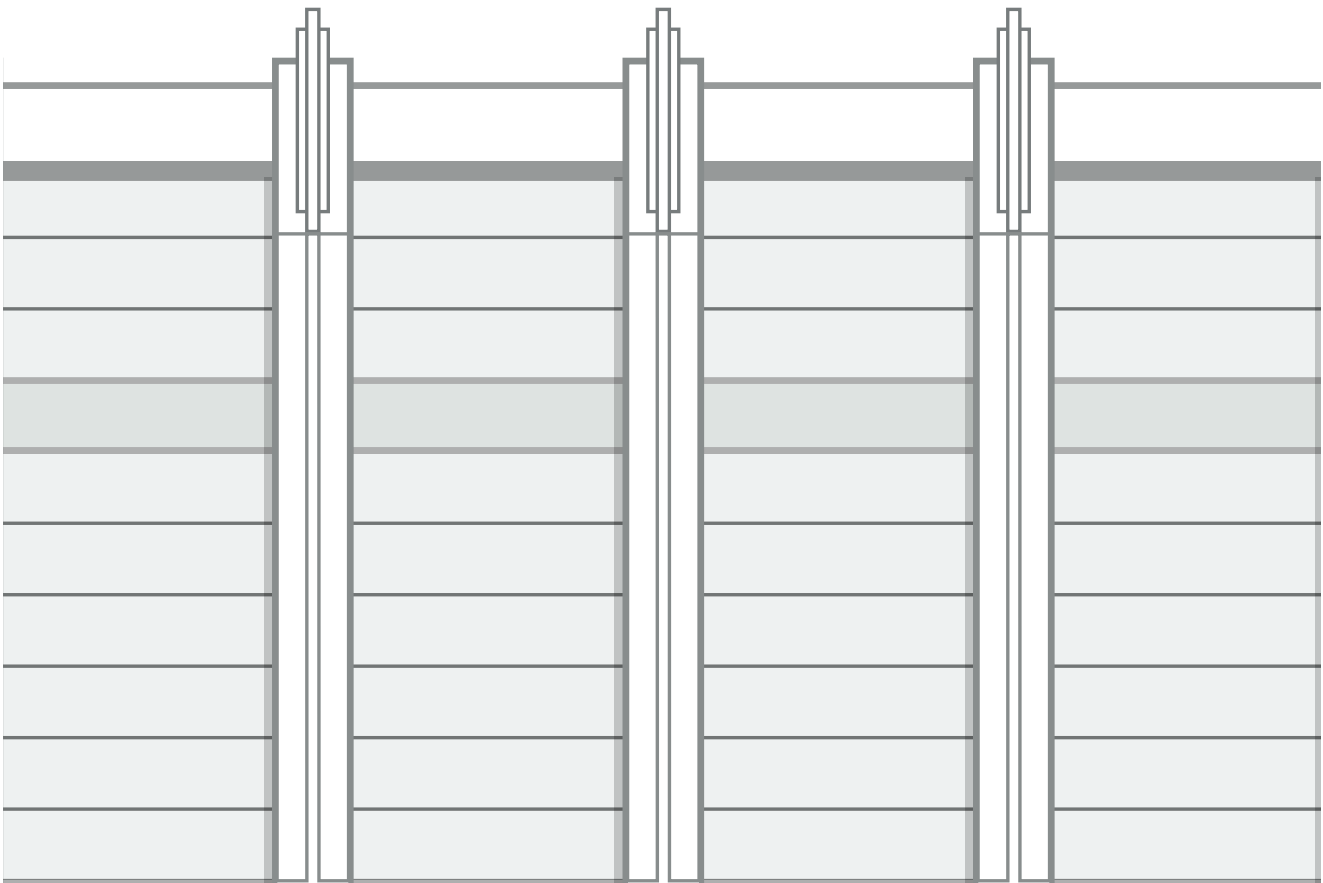


B

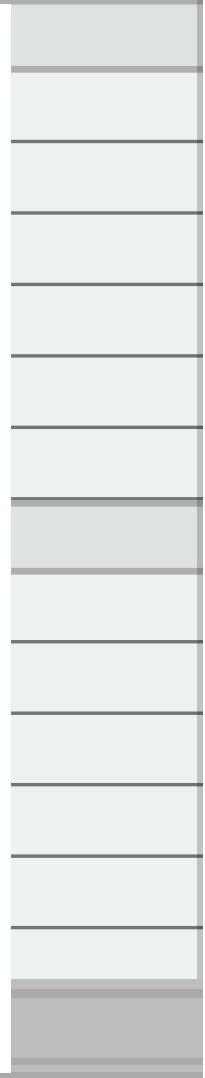


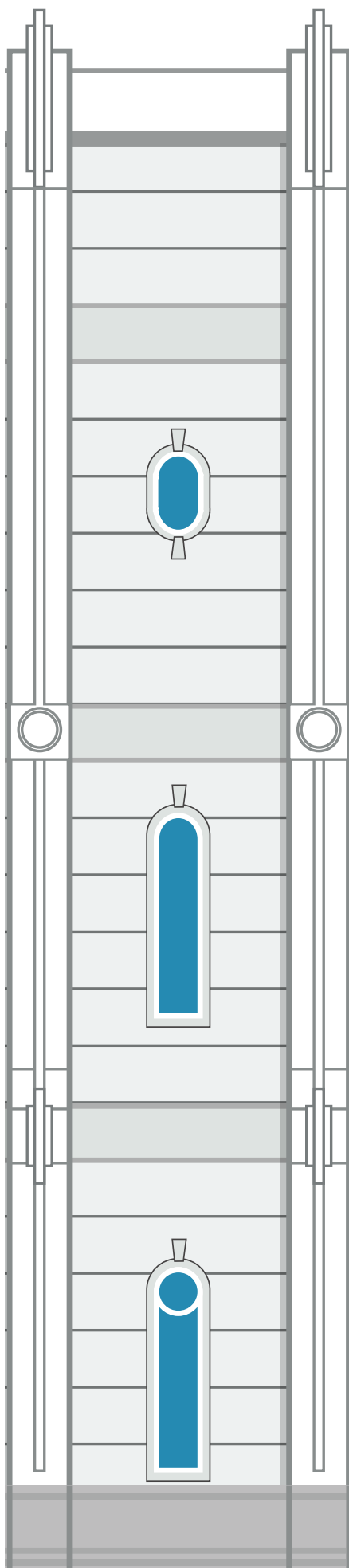






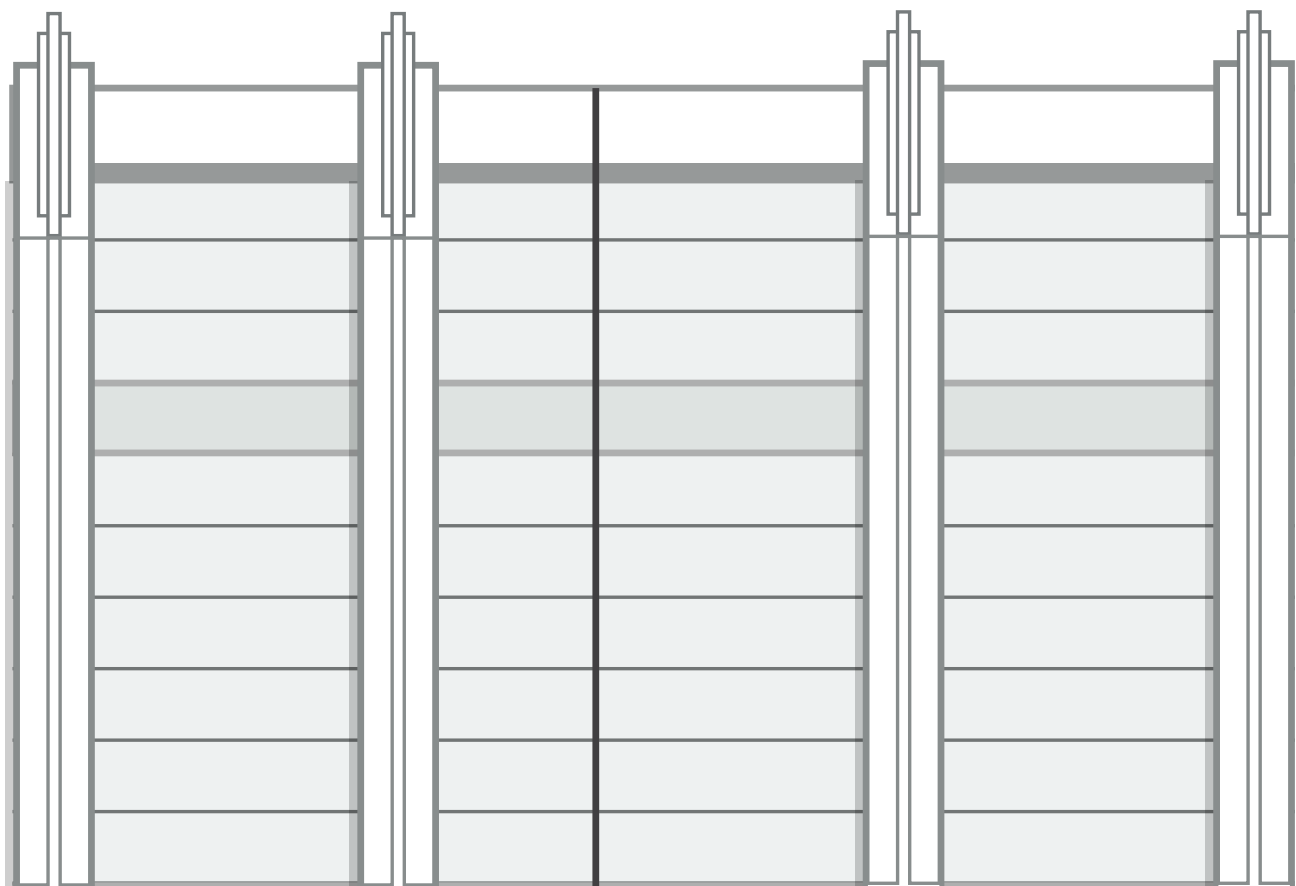
LEMUEL





left side of back

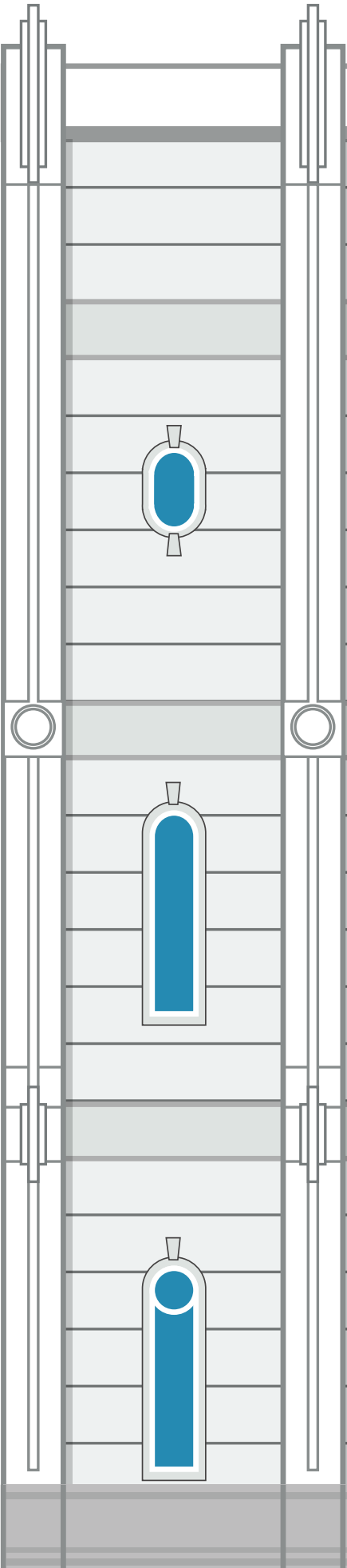
SAM

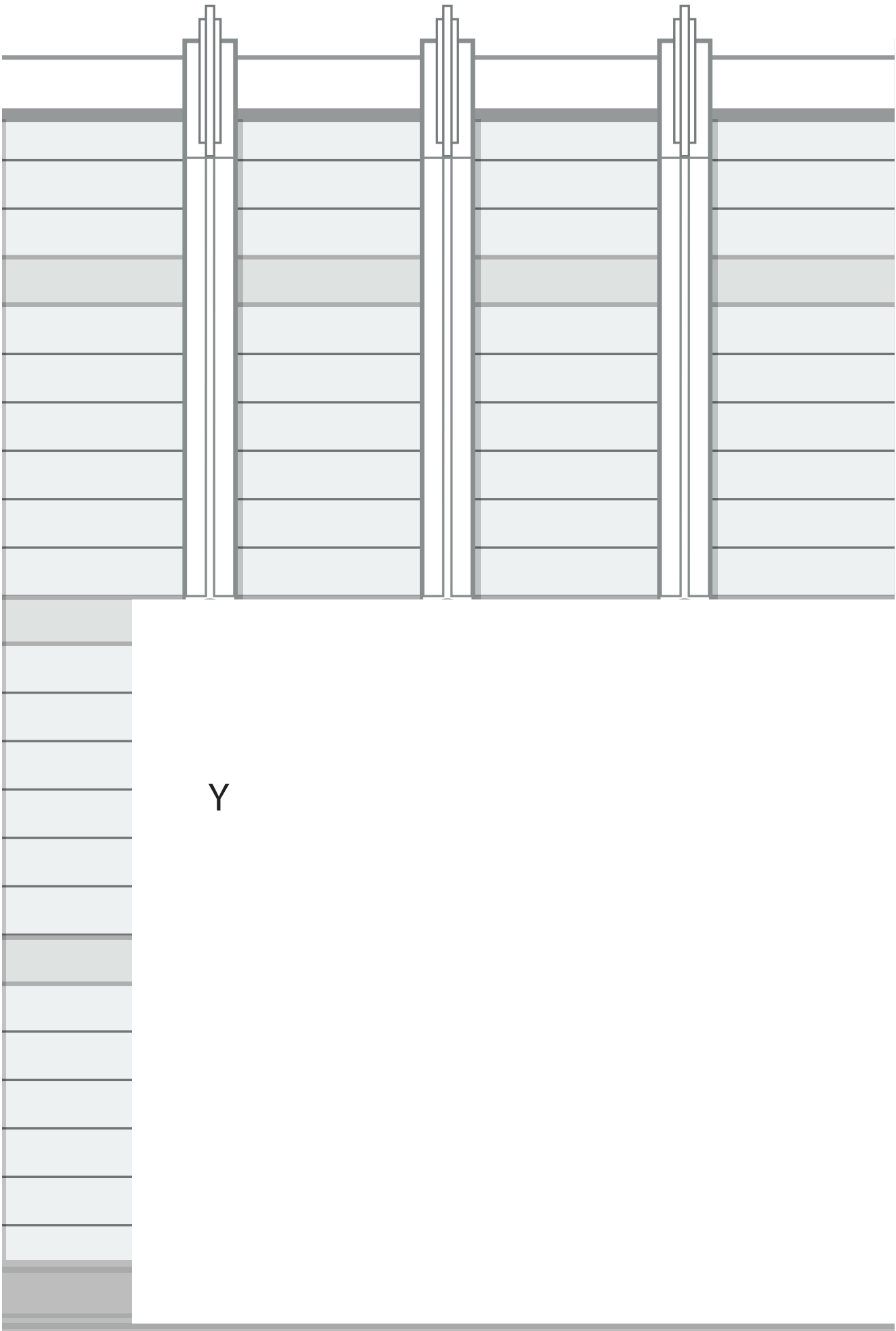


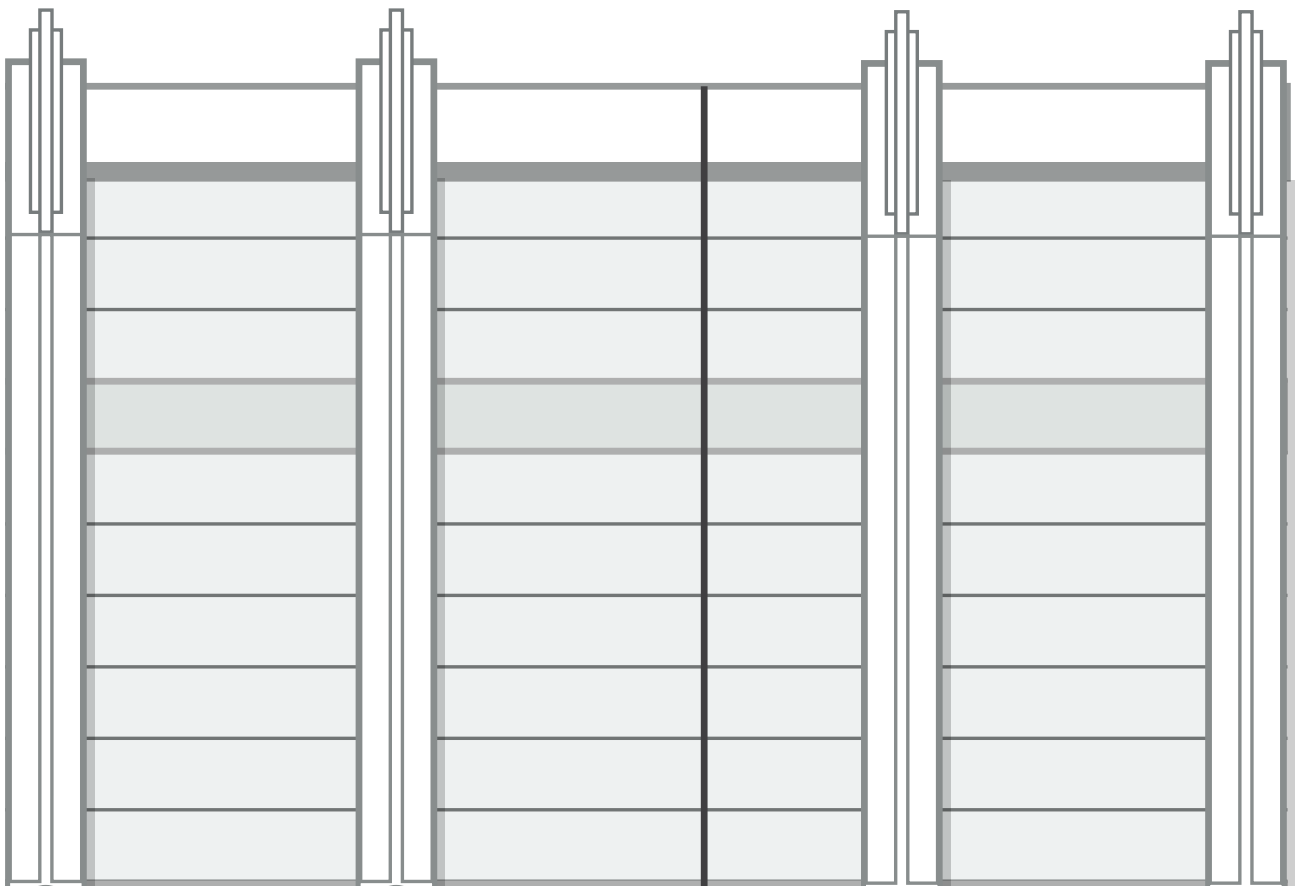
LAMAN

right side of back

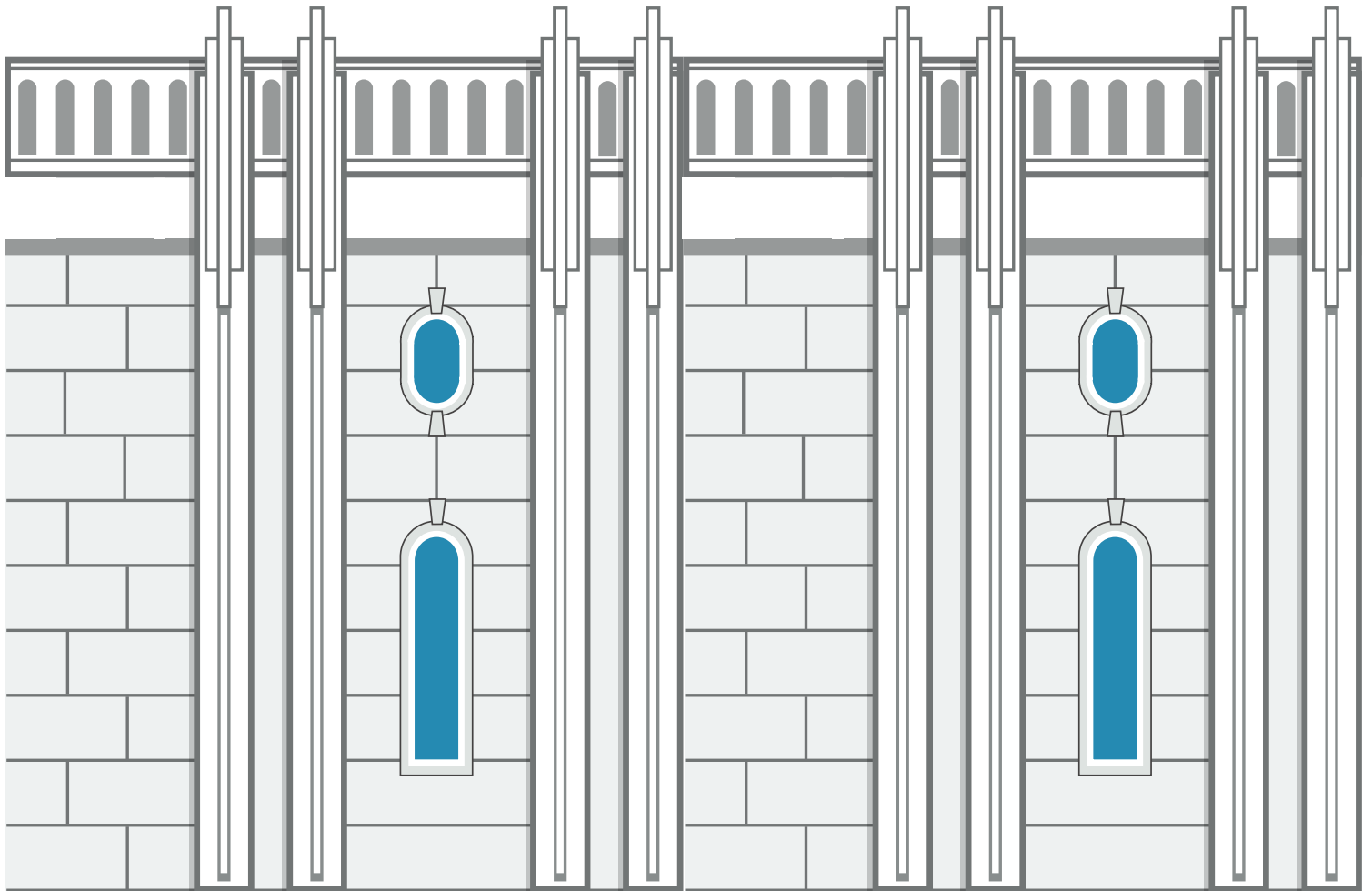
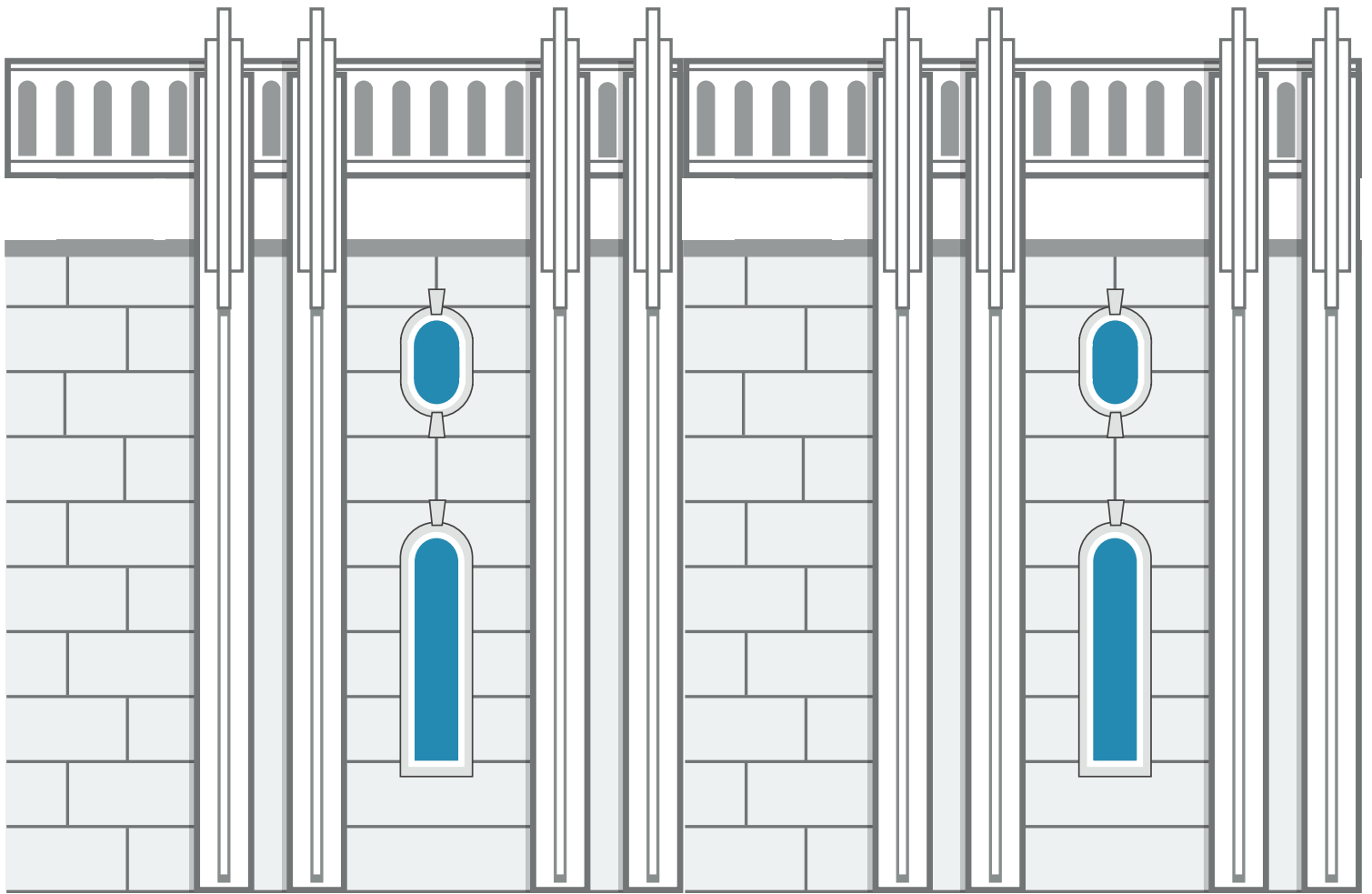
X

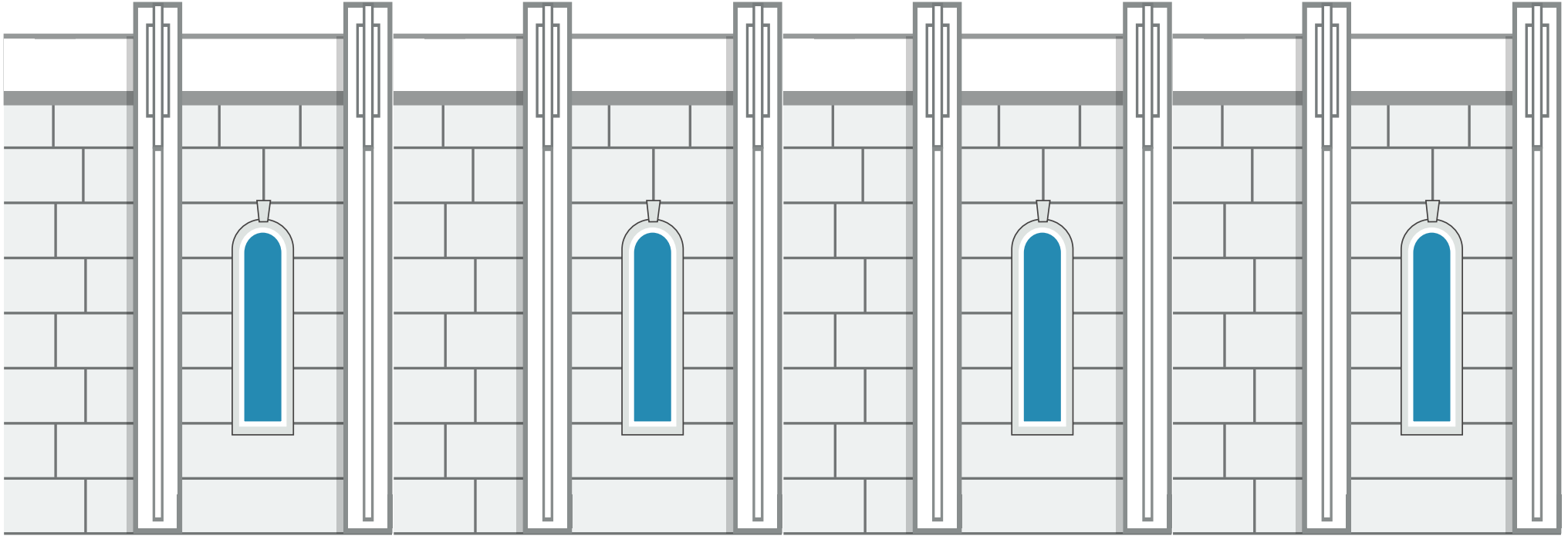


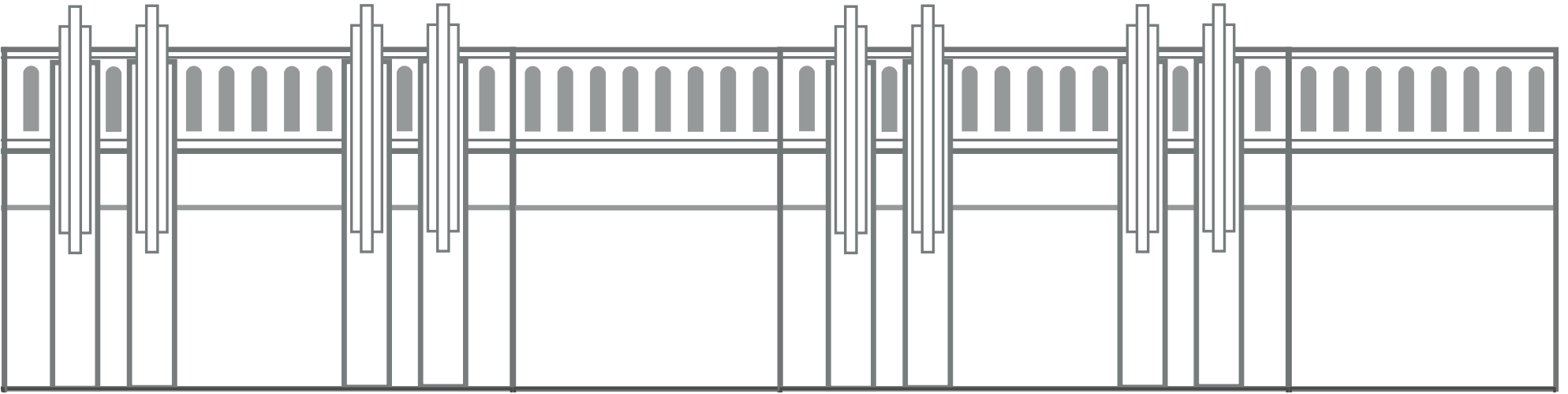
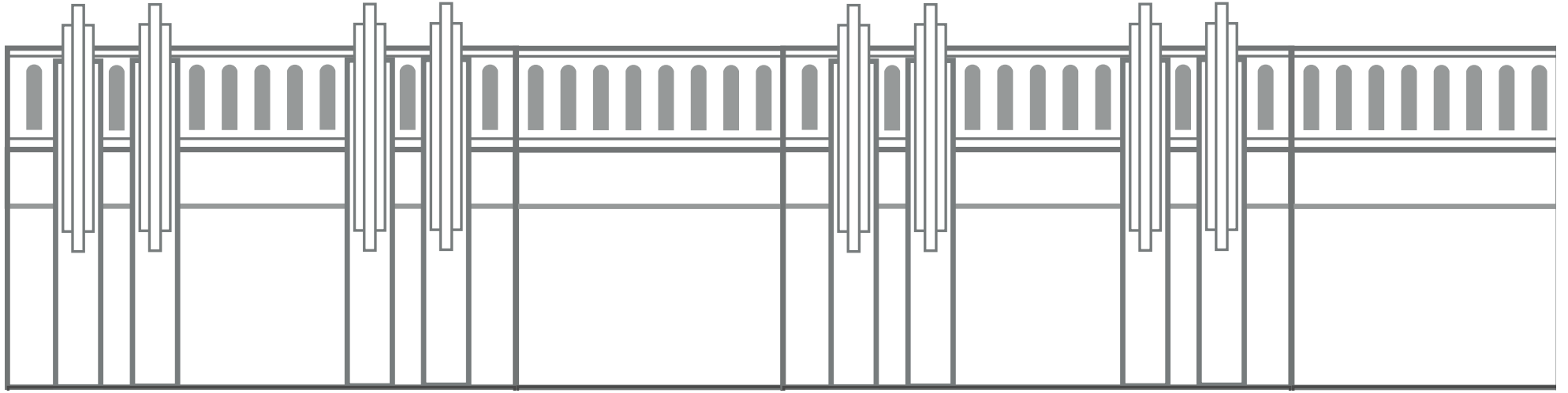


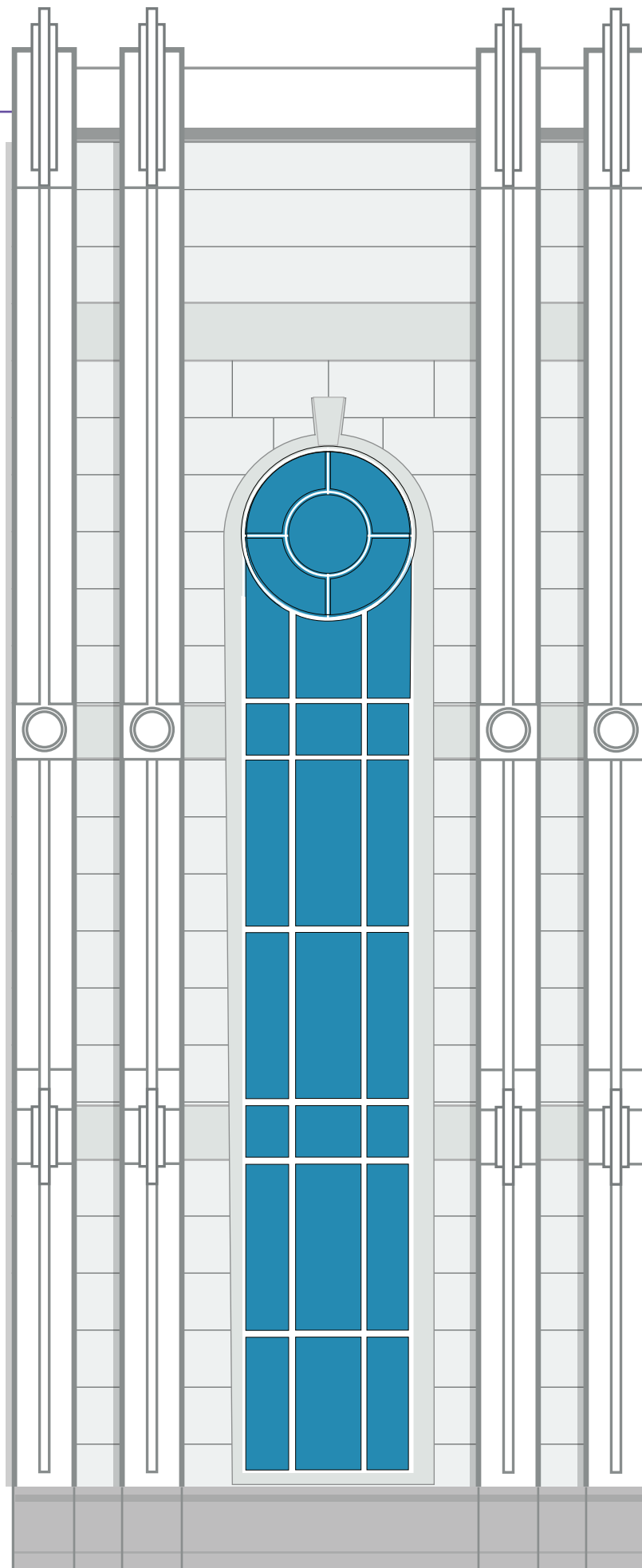


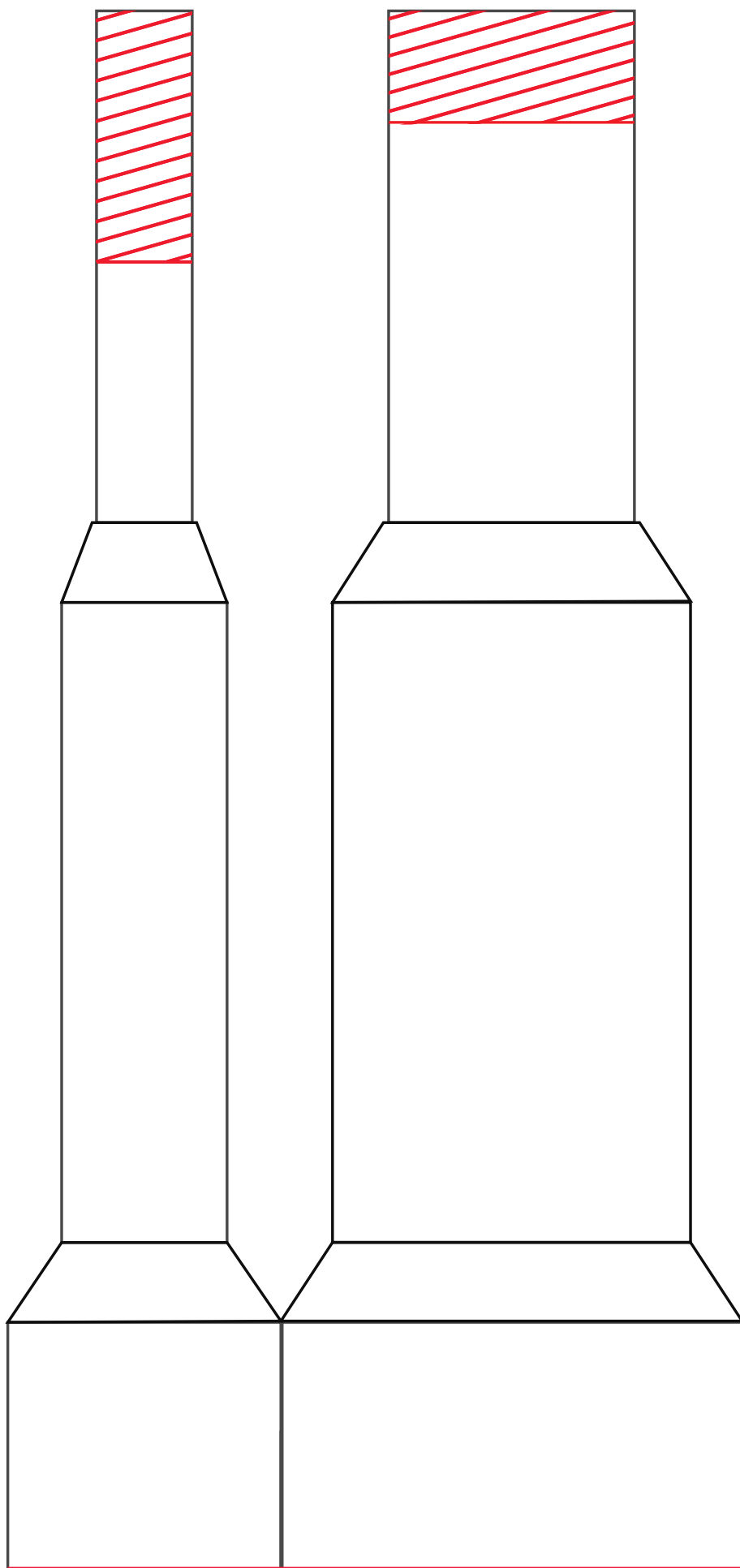
Z

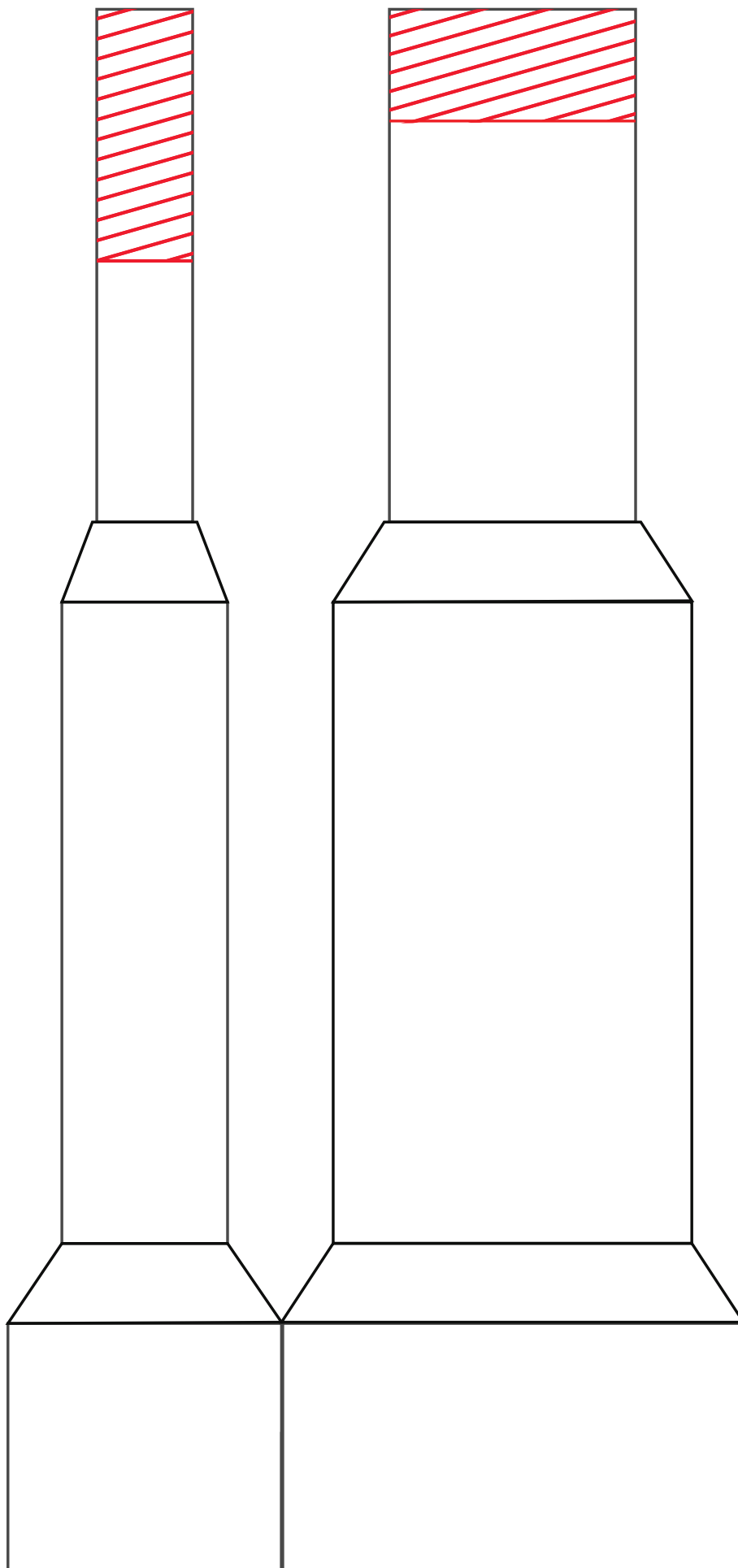


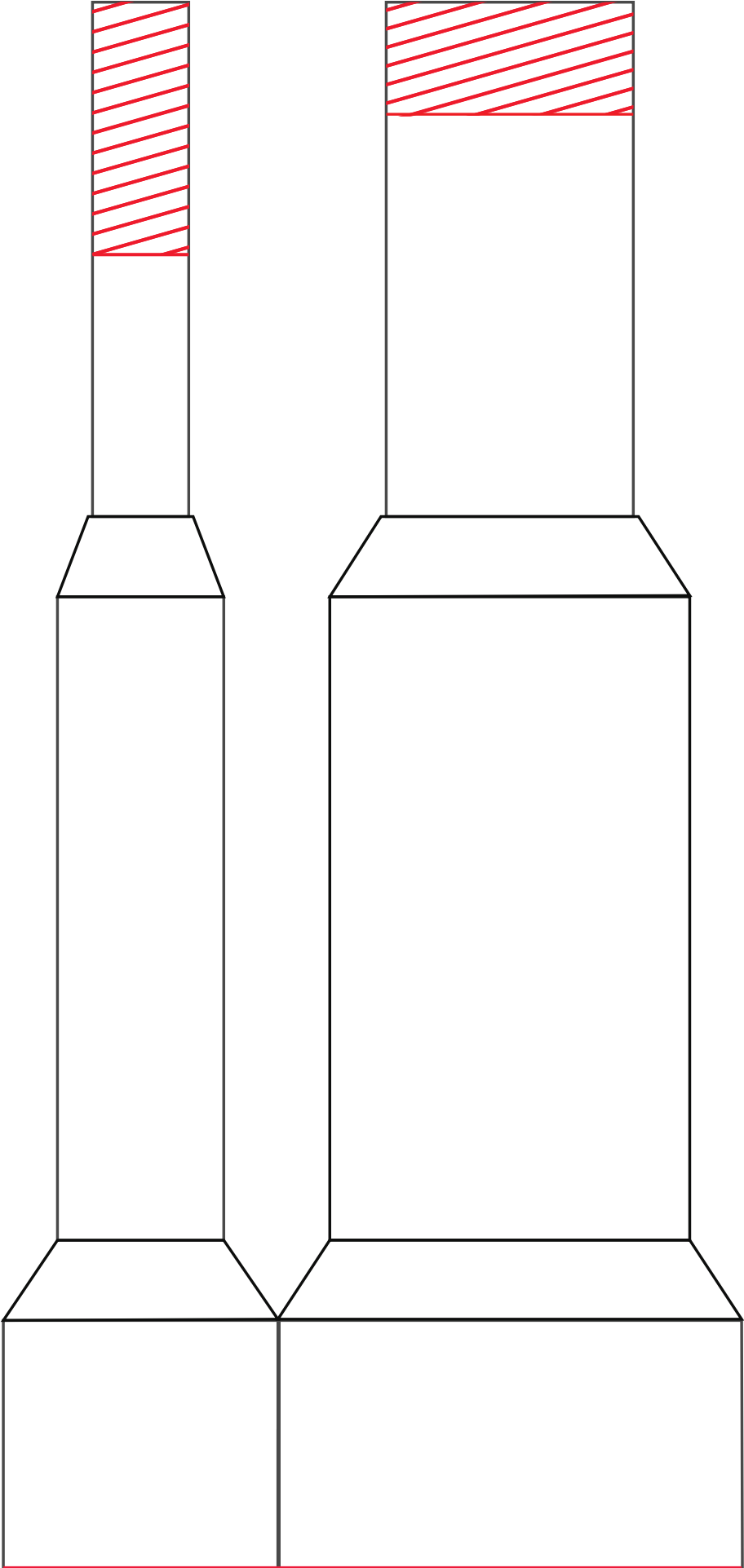


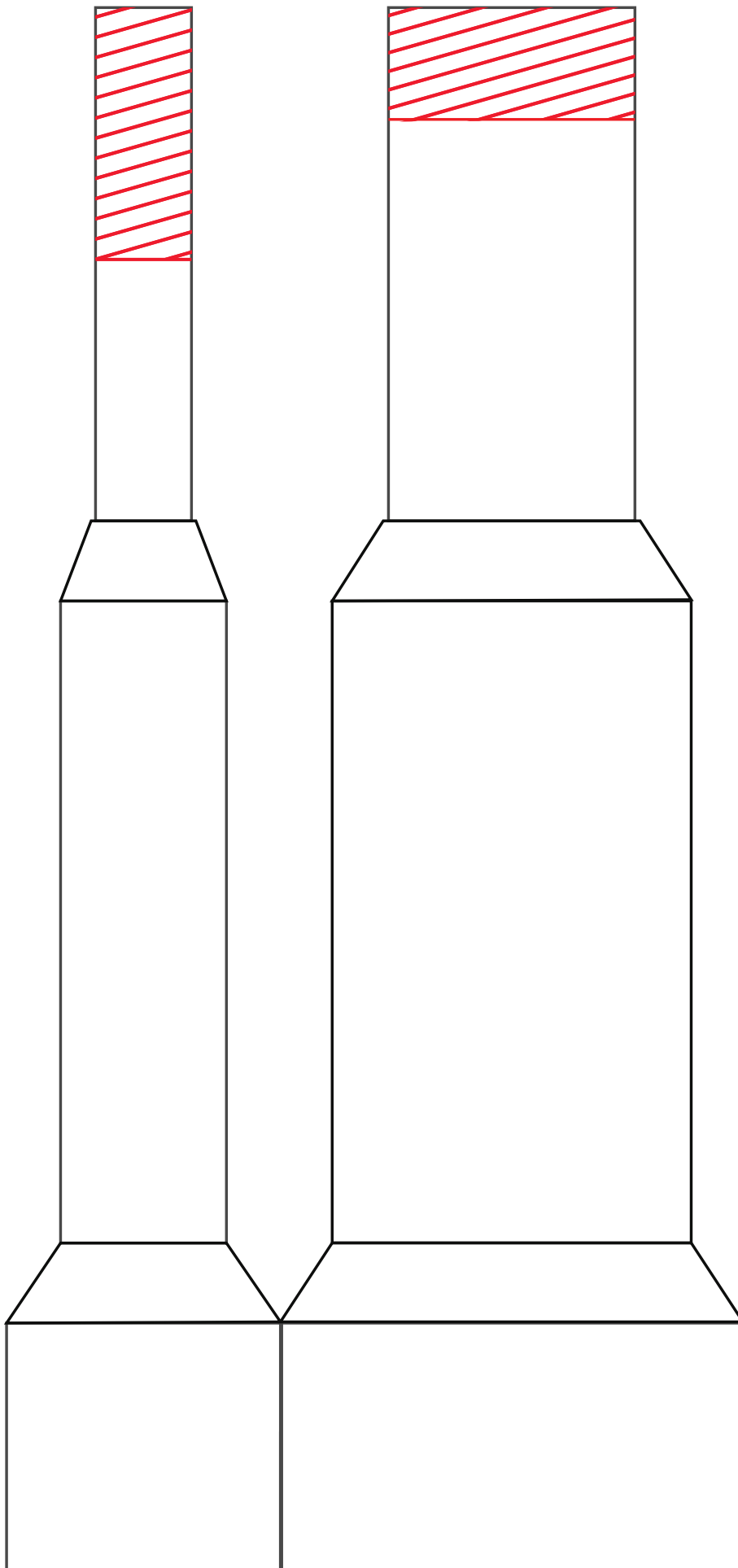


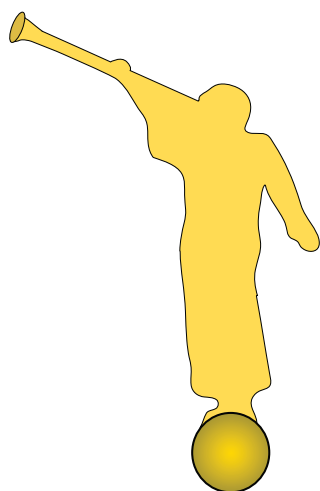












cut off
handle
after
painting-

